



[Go to Product page](#)

Datasheet for ABIN523112
anti-ABCG1 antibody (AA 21-130)

2 Images

Overview

Quantity:	100 µg
Target:	ABCG1
Binding Specificity:	AA 21-130
Reactivity:	Human
Host:	Mouse
Clonality:	Monoclonal
Conjugate:	This ABCG1 antibody is un-conjugated
Application:	ELISA, Immunofluorescence (IF)

Product Details

Purpose:	Mouse monoclonal antibody raised against a partial recombinant ABCG1.
Immunogen:	ABCG1 (AAH29158, 21 a.a. ~ 130 a.a) partial recombinant protein with GST tag. MW of the GST tag alone is 26 KDa.
Sequence:	AEMTEPKSVC VSVDEVSSN MEATETDLLN GHLKKVDNNL TEAQRFSSLP RRAAVNIEFR DLSYSVPEGP WWRKKGYKTL LKGISGKFNS GELVAIMGPS GAGKSTLMNI
Clone:	2H8
Isotype:	IgG1
Cross-Reactivity:	Human
Characteristics:	Antibody Reactive Against Recombinant Protein.

Target Details

Target:	ABCG1
Alternative Name:	ABCG1 (ABCG1 Products)
Background:	Full Gene Name: ATP-binding cassette, sub-family G (WHITE), member 1 Synonyms: ABC8,MGC34313,WHITE1
Gene ID:	9619
Pathways:	Lipid Metabolism

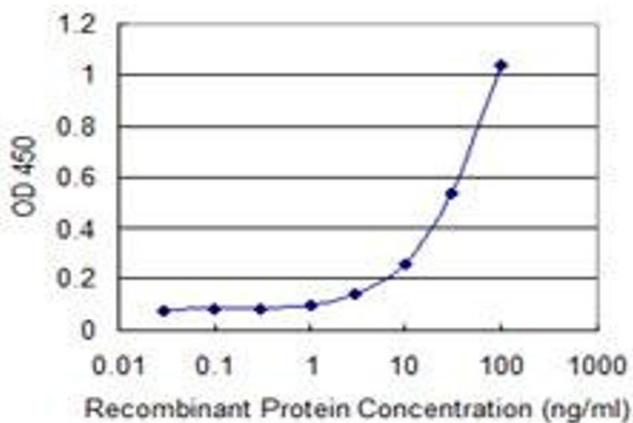
Application Details

Application Notes:	Optimal working dilution should be determined by the investigator.
Restrictions:	For Research Use only

Handling

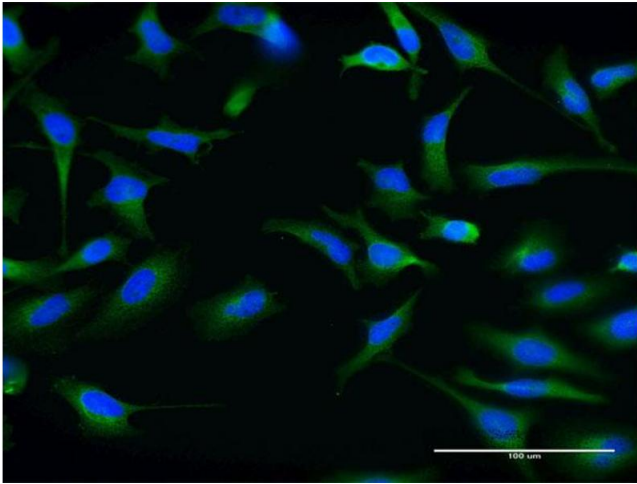
Buffer:	In 1x PBS, pH 7.4
Handling Advice:	Aliquot to avoid repeated freezing and thawing.
Storage:	-20 °C
Storage Comment:	Store at -20°C or lower. Aliquot to avoid repeated freezing and thawing.

Images



ELISA

Image 1. Detection limit for recombinant GST tagged ABCG1 is 1 ng/ml as a capture antibody.



Immunofluorescence

Image 2. Immunofluorescence of monoclonal antibody to ABCG1 on HeLa cell. [antibody concentration 20 µg/ml]