



[Go to Product page](#)

Datasheet for ABIN523117
anti-GUCA1C antibody (AA 1-209)

3 Images

Overview

Quantity:	100 µL
Target:	GUCA1C
Binding Specificity:	AA 1-209
Reactivity:	Human
Host:	Rabbit
Clonality:	Polyclonal
Conjugate:	This GUCA1C antibody is un-conjugated
Application:	Western Blotting (WB), Immunoprecipitation (IP), Immunofluorescence (IF)

Product Details

Purpose:	Rabbit polyclonal antibody raised against a full-length human GUCA1C protein.
Immunogen:	GUCA1C (NP_005450.2, 1 a.a. ~ 209 a.a) full-length human protein.
Sequence:	MGNKGSIAGD QKAVPTQETH VWYRTFMMEY PSGLQTLHEF KTLGLGLQGLN QKANKHIDQV YNTFDTNKDG FIDFLEFIAA VNLIMQEKME QKLKWFYFKLY DADGNNGSIDK NELLDMFMAV QALNGQQTLS PEEFINLVFH KIDINNDGEL TLEEFINGMA KDQDLLEIVY KSFDFSNVLR VICNGKQPDM ETDSSKSPDK AGLGKVKMK
Cross-Reactivity:	Human
Characteristics:	Antibody reactive against mammalian transfected lysate.

Target Details

Target:	GUCA1C
---------	--------

Target Details

Alternative Name:	GUCA1C (GUCA1C Products)
Background:	Full Gene Name: guanylate cyclase activator 1C Synonyms: GCAP3,MGC120158,MGC120159
Gene ID:	9626
NCBI Accession:	NM_005459
Pathways:	Regulation of G-Protein Coupled Receptor Protein Signaling , Phototransduction

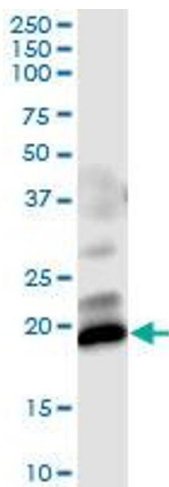
Application Details

Application Notes:	Optimal working dilution should be determined by the investigator.
Restrictions:	For Research Use only

Handling

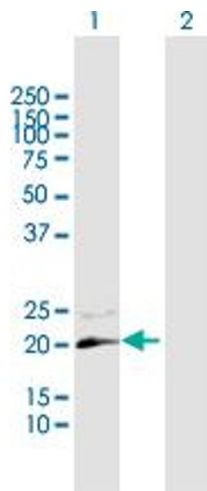
Format:	Liquid
Buffer:	No additive
Preservative:	Without preservative
Handling Advice:	Aliquot to avoid repeated freezing and thawing.
Storage:	-20 °C
Storage Comment:	Store at -20°C or lower. Aliquot to avoid repeated freezing and thawing.

Images



Immunoprecipitation

Image 1. Immunoprecipitation of GUCA1C transfected lysate using anti-GUCA1C MaxPab rabbit polyclonal antibody and Protein A Magnetic Bead, and immunoblotted with GUCA1C purified MaxPab mouse polyclonal antibody (B01P).

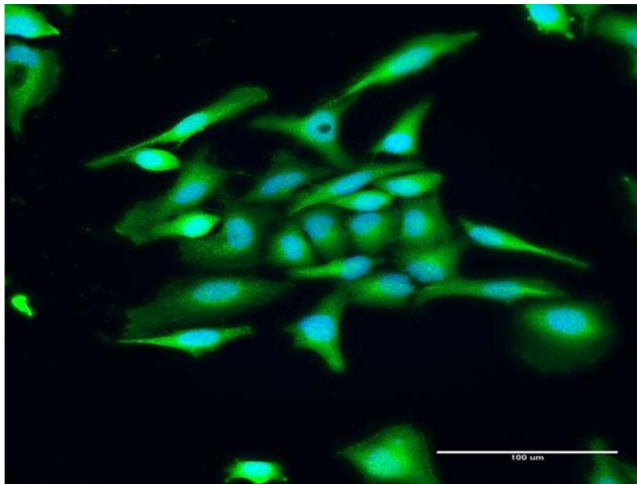


Western Blotting

Image 2. Western Blot analysis of GUCA1C expression in transfected 293T cell line by GUCA1C MaxPab polyclonal antibody.

Lane 1: GUCA1C transfected lysate(23.8 KDa).

Lane 2: Non-transfected lysate.



Immunofluorescence

Image 3. Immunofluorescence of purified MaxPab antibody to GUCA1C on HeLa cell. [antibody concentration 20 ug/ml]