



Datasheet for ABIN523119
anti-GUCA1C antibody (AA 110-209)



[Go to Product page](#)

3 Images

Overview

Quantity:	100 µg
Target:	GUCA1C
Binding Specificity:	AA 110-209
Reactivity:	Human
Host:	Mouse
Clonality:	Monoclonal
Conjugate:	This GUCA1C antibody is un-conjugated
Application:	Western Blotting (WB), ELISA, Immunoprecipitation (IP)

Product Details

Purpose:	Mouse monoclonal antibody raised against a partial recombinant GUCA1C.
Immunogen:	GUCA1C (NP_005450.2, 110 a.a. ~ 209 a.a) partial recombinant protein with GST tag. MW of the GST tag alone is 26 KDa.
Sequence:	KNKLLDMFMA VQALNGQQL SPEEFINLVF HKIDINNDGE LTLEEFINGM AKDQDLLEIV YKSFDFSNVL RVICNGKQPD METDSSKSPD KAGLGKVKMK
Clone:	3F10
Isotype:	IgG2a
Cross-Reactivity:	Human
Characteristics:	Antibody Reactive Against Recombinant Protein.

Target Details

Target:	GUCA1C
Alternative Name:	GUCA1C (GUCA1C Products)
Background:	Full Gene Name: guanylate cyclase activator 1C Synonyms: GCAP3,MGC120158,MGC120159
Gene ID:	9626
NCBI Accession:	NM_005459
Pathways:	Regulation of G-Protein Coupled Receptor Protein Signaling, Phototransduction

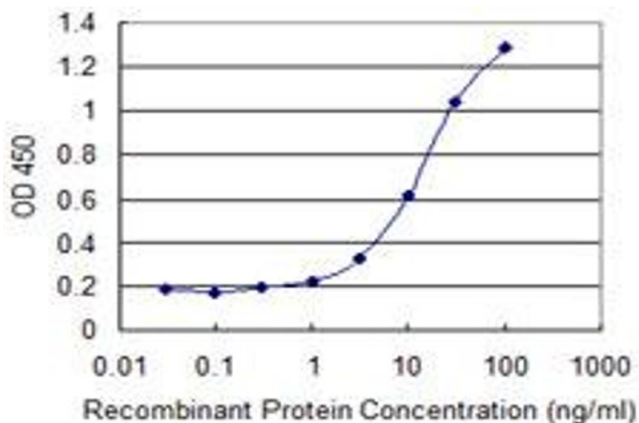
Application Details

Application Notes:	Optimal working dilution should be determined by the investigator.
Restrictions:	For Research Use only

Handling

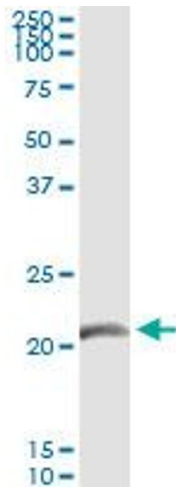
Buffer:	In 1x PBS, pH 7.4
Handling Advice:	Aliquot to avoid repeated freezing and thawing.
Storage:	-20 °C
Storage Comment:	Store at -20°C or lower. Aliquot to avoid repeated freezing and thawing.

Images



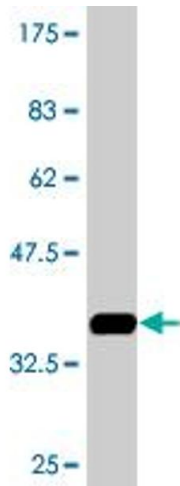
ELISA

Image 1. Detection limit for recombinant GST tagged GUCA1C is 0.3 ng/ml as a capture antibody.



Immunoprecipitation

Image 2. Immunoprecipitation of GUCA1C transfected lysate using anti-GUCA1C monoclonal antibody and Protein A Magnetic Bead , and immunoblotted with GUCA1C MaxPab rabbit polyclonal antibody.



Western Blotting

Image 3. Western Blot detection against Immunogen (36.74 KDa) .