

Datasheet for ABIN523141
anti-PPM1F antibody (AA 1-100)

3 Images

[Go to Product page](#)

Overview

Quantity:	100 µg
Target:	PPM1F
Binding Specificity:	AA 1-100
Reactivity:	Human
Host:	Mouse
Clonality:	Monoclonal
Conjugate:	This PPM1F antibody is un-conjugated
Application:	Western Blotting (WB), ELISA, Immunoprecipitation (IP)

Product Details

Purpose:	Mouse monoclonal antibody raised against a partial recombinant PPM1F.
Immunogen:	PPM1F (NP_055449, 1 a.a. ~ 100 a.a) partial recombinant protein with GST tag. MW of the GST tag alone is 26 KDa.
Sequence:	MSSGAPQKSS PMASGAEETP GFLDTLLQDF PALLNPEDPL PWKAPGTVLS QEEVEGELAE LAMGFLGSRK APPPLAAALA HEAVSQLLQT DLSEFRKLPR
Clone:	1G10
Isotype:	IgG2a
Cross-Reactivity:	Human
Characteristics:	Antibody Reactive Against Recombinant Protein.

Target Details

Target:	PPM1F
Alternative Name:	PPM1F (PPM1F Products)
Background:	Full Gene Name: protein phosphatase 1F (PP2C domain containing) Synonyms: CaMKPase,FEM-2,KIAA0015,POPX2,hFEM-2
Gene ID:	9647
NCBI Accession:	NM_014634
Pathways:	Positive Regulation of Endopeptidase Activity

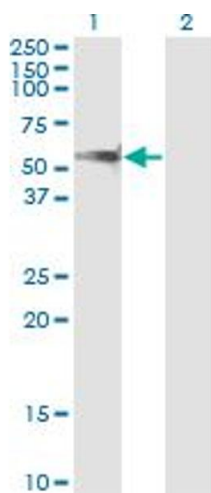
Application Details

Application Notes:	Optimal working dilution should be determined by the investigator.
Restrictions:	For Research Use only

Handling

Buffer:	In 1x PBS, pH 7.4
Handling Advice:	Aliquot to avoid repeated freezing and thawing.
Storage:	-20 °C
Storage Comment:	Store at -20°C or lower. Aliquot to avoid repeated freezing and thawing.

Images

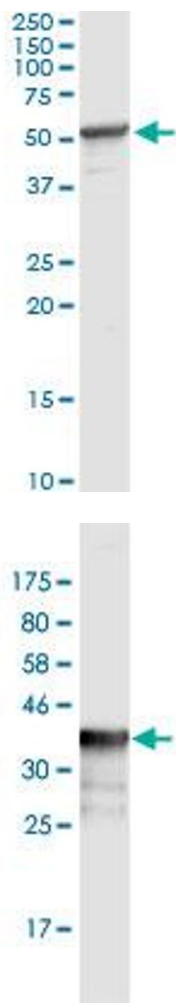


Western Blotting

Image 1. Western Blot analysis of PPM1F expression in transfected 293T cell line by PPM1F monoclonal antibody (M02), clone 1G10.

Lane 1: PPM1F transfected lysate(49.8 KDa).

Lane 2: Non-transfected lysate.



Immunoprecipitation

Image 2. Immunoprecipitation of PPM1F transfected lysate using anti-PPM1F monoclonal antibody and Protein A Magnetic Bead , and immunoblotted with PPM1F MaxPab rabbit polyclonal antibody.

Western Blotting

Image 3. Western Blot detection against Immunogen (36.74 KDa) .