



[Go to Product page](#)

Datasheet for ABIN523143
anti-MTFR1 antibody (AA 1-333)

1 Image

Overview

Quantity:	50 µg
Target:	MTFR1
Binding Specificity:	AA 1-333
Reactivity:	Human
Host:	Mouse
Clonality:	Polyclonal
Conjugate:	This MTFR1 antibody is un-conjugated
Application:	Western Blotting (WB)

Product Details

Purpose:	Mouse polyclonal antibody raised against a full-length human MTFR1 protein.
Immunogen:	MTFR1 (AAH43498, 1 a.a. ~ 333 a.a) full-length human protein.
Sequence:	MLGWIKRLIR MVFQQVGVSM QSVLWSRKPYPY GSSRSIVRKI GTNLSLIQCP RVQFQINSHA TEWSPSHPGE DAVASFADVG WVAKEEGECS ARLRTEVRSR PPLQDDLLFF EKAPSRQISL PDLSQEEPQL KTPALANEEA LQKICALENE LAALRAQIAK IVTQQEQQNL TAGDLDSTTF GTIPPHPPPP PPPLPPPALG LHQSTSAVDL IKERREKRAN AGKTLVKNNP KKPEMPNMLE ILKEMNSVKL RSVKRSEQDV KPKPVDATDP AALIAEALKK KFAYRYRSDS QDEVEKGIPK SESEATSERV LFGPHMLKPT GKMKALIENV SDS
Cross-Reactivity:	Human
Characteristics:	Antibody reactive against mammalian transfected lysate.

Target Details

Target:	MTFR1
Alternative Name:	MTFR1 (MTFR1 Products)
Background:	Full Gene Name: mitochondrial fission regulator 1 Synonyms: CHPPR,FAM54A2,KIAA0009
Gene ID:	9650

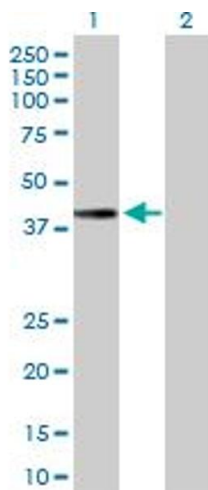
Application Details

Application Notes:	Optimal working dilution should be determined by the investigator.
Restrictions:	For Research Use only

Handling

Buffer:	In 1x PBS, pH 7.4
Handling Advice:	Aliquot to avoid repeated freezing and thawing.
Storage:	-20 °C
Storage Comment:	Store at -20°C or lower. Aliquot to avoid repeated freezing and thawing.

Images



Western Blotting

Image 1. Western Blot analysis of MTFR1 expression in transfected 293T cell line by MTFR1 MaxPab polyclonal antibody.

Lane 1: MTFR1 transfected lysate(36.63 KDa).

Lane 2: Non-transfected lysate.