

Datasheet for ABIN523159  
**anti-SAFB2 antibody (AA 103-199)**

## 3 Images

[Go to Product page](#)

## Overview

Quantity:	100 µg
Target:	SAFB2
Binding Specificity:	AA 103-199
Reactivity:	Human
Host:	Mouse
Clonality:	Monoclonal
Conjugate:	This SAFB2 antibody is un-conjugated
Application:	Western Blotting (WB), ELISA

## Product Details

Purpose:	Mouse monoclonal antibody raised against a partial recombinant SAFB2.
Immunogen:	SAFB2 (NP_055464, 103 a.a. ~ 199 a.a) partial recombinant protein with GST tag. MW of the GST tag alone is 26 KDa.
Sequence:	NGLEDDSRDG QEDMEASLEN LQNMGMMDMS VLDETEVANS SAPDFGEDGT DGLLDSFCDS KEYVAAQLRQ LPAQPPEHAV DGEGFKNTLE TSSLNFK
Clone:	4H3
Isotype:	IgG2a
Cross-Reactivity:	Human
Characteristics:	Antibody Reactive Against Recombinant Protein.

## Target Details

Target:	SAFB2
Alternative Name:	SAFB2 ( <a href="#">SAFB2 Products</a> )
Background:	Full Gene Name: scaffold attachment factor B2 Synonyms: KIAA0138
Gene ID:	9667
NCBI Accession:	<a href="#">NM_014649</a>

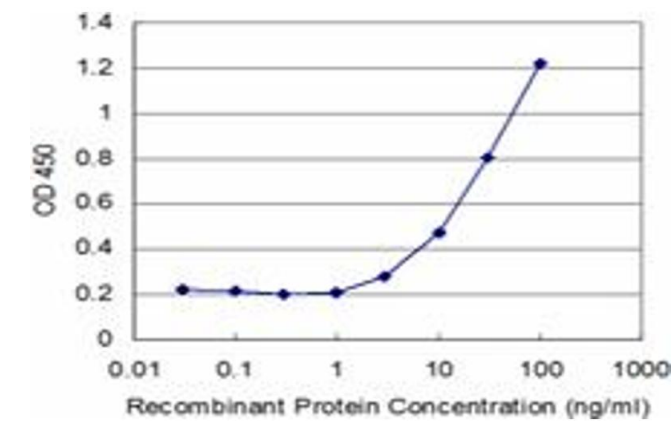
## Application Details

Application Notes:	Optimal working dilution should be determined by the investigator.
Restrictions:	For Research Use only

## Handling

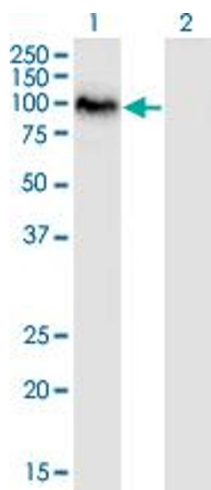
Buffer:	In 1x PBS, pH 7.4
Handling Advice:	Aliquot to avoid repeated freezing and thawing.
Storage:	-20 °C
Storage Comment:	Store at -20°C or lower. Aliquot to avoid repeated freezing and thawing.

## Images



### ELISA

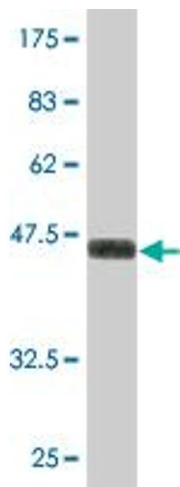
**Image 1.** Detection limit for recombinant GST tagged SAFB2 is approximately 3ng/ml as a capture antibody.



**Western Blotting**

**Image 2.** Western Blot analysis of SAFB2 expression in transfected 293T cell line by SAFB2 monoclonal antibody (M01), clone 4H3.

Lane 1: SAFB2 transfected lysate (Predicted MW: 57.2 KDa).  
Lane 2: Non-transfected lysate.



**Western Blotting**

**Image 3.** Western Blot detection against Immunogen (36.41 KDa) .