



Datasheet for ABIN523204  
**anti-PHACTR2 antibody (AA 56-143)**



[Go to Product page](#)

2 Images

Overview

Quantity:	50 µL
Target:	PHACTR2
Binding Specificity:	AA 56-143
Reactivity:	Human
Host:	Mouse
Clonality:	Polyclonal
Conjugate:	This PHACTR2 antibody is un-conjugated
Application:	Western Blotting (WB), ELISA

Product Details

Purpose:	Mouse polyclonal antibody raised against a partial recombinant PHACTR2.
Immunogen:	PHACTR2 (NP_055536, 56 a.a. ~ 143 a.a) partial recombinant protein with GST tag.
Sequence:	RETSAVLERK ISTRQSREEL IRRGVLKELP DQDGDVTVNF ENSNGHMIPI GEESTREENV VKSEEGNGSV SEKTPPLEEQ AEDKKENT
Cross-Reactivity:	Human, Mouse
Characteristics:	Antibody Reactive Against Recombinant Protein.

Target Details

Target:	PHACTR2
Alternative Name:	PHACTR2 ( <a href="#">PHACTR2 Products</a> )

## Target Details

Background:	Full Gene Name: phosphatase and actin regulator 2 Synonyms: C6orf56,DKFZp686F18175,KIAA0680,MGC176642
Gene ID:	9749
NCBI Accession:	<a href="#">NM_014721</a>

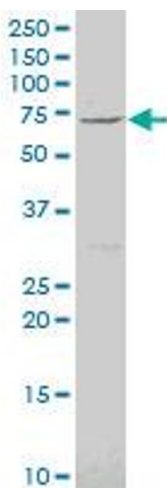
## Application Details

Application Notes:	Optimal working dilution should be determined by the investigator.
Restrictions:	For Research Use only

## Handling

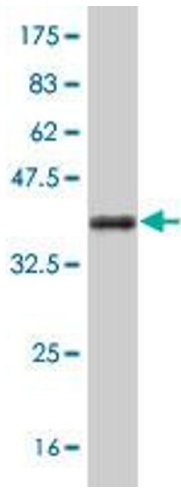
Format:	Liquid
Buffer:	50 % glycerol
Handling Advice:	Aliquot to avoid repeated freezing and thawing.
Storage:	-20 °C
Storage Comment:	Store at -20°C or lower. Aliquot to avoid repeated freezing and thawing.

## Images



### Western Blotting

**Image 1.** PHACTR2 polyclonal antibody (A01), Lot # 061025JCS1. Western Blot analysis of PHACTR2 expression in Raw 264.7.



### Western Blotting

**Image 2.** Western Blot detection against Immunogen (35.79 kDa).