



[Go to Product page](#)

Datasheet for ABIN523205

## anti-PHACTR2 antibody (AA 56-143)

### 3 Images

#### Overview

Quantity:	100 µg
Target:	PHACTR2
Binding Specificity:	AA 56-143
Reactivity:	Human
Host:	Mouse
Clonality:	Monoclonal
Conjugate:	This PHACTR2 antibody is un-conjugated
Application:	Western Blotting (WB), ELISA

#### Product Details

Purpose:	Mouse monoclonal antibody raised against a partial recombinant PHACTR2.
Immunogen:	PHACTR2 (NP_055536, 56 a.a. ~ 143 a.a) partial recombinant protein with GST tag. MW of the GST tag alone is 26 KDa.
Sequence:	RETSAVLERK ISTRQSREEL IRRGVLKELP DQDGDVTVNF ENSNGHMIPI GEESTREENV VKSEEGNGSV SEKTPPLEEQ AEDKKENT
Clone:	1B12
Isotype:	IgG2b
Cross-Reactivity:	Human, Rat
Characteristics:	Antibody Reactive Against Recombinant Protein.

## Target Details

Target:	PHACTR2
Alternative Name:	PHACTR2 ( <a href="#">PHACTR2 Products</a> )
Background:	Full Gene Name: phosphatase and actin regulator 2 Synonyms: C6orf56,DKFZp686F18175,KIAA0680,MGC176642
Gene ID:	9749
NCBI Accession:	<a href="#">NM_014721</a>

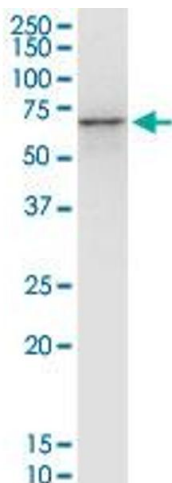
## Application Details

Application Notes:	Optimal working dilution should be determined by the investigator.
Restrictions:	For Research Use only

## Handling

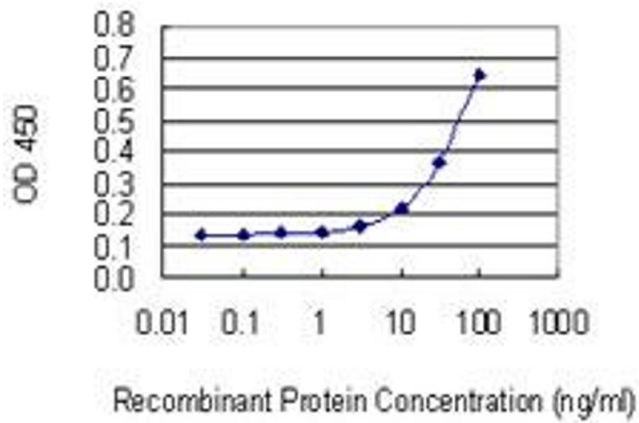
Buffer:	In 1x PBS, pH 7.4
Handling Advice:	Aliquot to avoid repeated freezing and thawing.
Storage:	-20 °C
Storage Comment:	Store at -20°C or lower. Aliquot to avoid repeated freezing and thawing.

## Images



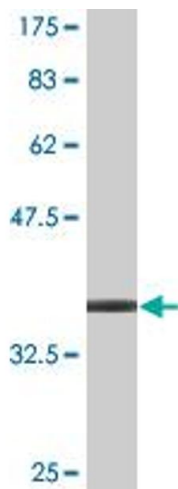
### Western Blotting

**Image 1.** PHACTR2 monoclonal antibody (M10), clone 1B12. Western Blot analysis of PHACTR2 expression in PC-12.



### ELISA

**Image 2.** Detection limit for recombinant GST tagged PHACTR2 is 1 ng/ml as a capture antibody.



### Western Blotting

**Image 3.** Western Blot detection against Immunogen (35.42 kDa).