

Datasheet for ABIN523249  
**anti-NUPL1 antibody (AA 1-599)**



[Go to Product page](#)

3 Images

Overview

Quantity:	50 µg
Target:	NUPL1
Binding Specificity:	AA 1-599
Reactivity:	Human
Host:	Mouse
Clonality:	Polyclonal
Conjugate:	This NUPL1 antibody is un-conjugated
Application:	Western Blotting (WB), Immunofluorescence (IF)

Product Details

Purpose:	Mouse polyclonal antibody raised against a full-length human NUPL1 protein.
Immunogen:	NUPL1 (NP_054808.1, 1 a.a. ~ 599 a.a) full-length human protein.
Sequence:	MSTGFSFGSG TLGSTTVAAG GTSTGGVFSF GTGASSNPSV GLNFGNLGST STPATTAPS SGFGTGLFGS KPATGFTLGG TNTGIATTIT TGLTLGTPAT TSAATTGFSL GFNKPAASAT PFALPITSTS ASGLTLSSAL TSTPAASTGF TLNNLGGTTA TTTTASTGLS LGGALAGLGG SLFQSTNTGT SGLGQNALGL TLGTTAATST AGNEGLGGID FSSSSDKKSD KTGTRPEDSK ALKDENLPPV ICQDVENLQK FVKEQKQVQE EISMSSKAM LKVQEDIKAL KQLLSLAANG IQRNTLNIDK LKIETAQELK NAEIALRTQK TPPGLQHEYA APADYFRILV QQFEVQLQQY RQQIEELENH LATQANNSHI TPQDLSMAMQ KIQQTFVALA AQLQSIHENV KVLKEQYLG RKMFLGDAVD VFETRRAEAK KWQNTPRVTT GPTPFSTMPN AAVAMAATL TQQQPATGP QPSLGVVSGT PFGSGIGTGL QSSGLGSSNL GGFGTSSGFG CSTTGASTFG FGTTNKPSGS LSAGFGSSST SGFNFSNPGI TASAGLTFGV SNPASAGFGT GGQLLQLKKP PAGNKRGRK

## Product Details

---

Cross-Reactivity:	Human
Characteristics:	Antibody reactive against mammalian transfected lysate.

## Target Details

---

Target:	NUPL1
Alternative Name:	NUPL1 ( <a href="#">NUPL1 Products</a> )
Background:	Full Gene Name: nucleoporin like 1 Synonyms: KIAA0410,PRO2463
Gene ID:	9818
NCBI Accession:	<a href="#">NM_014089</a>
Pathways:	<a href="#">SARS-CoV-2 Protein Interactome</a>

## Application Details

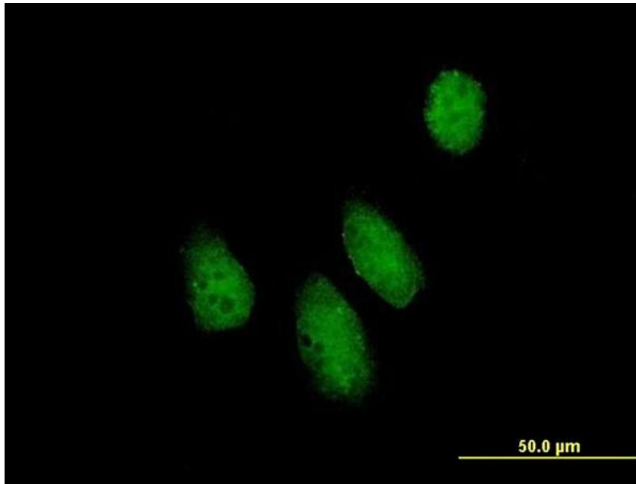
---

Application Notes:	Optimal working dilution should be determined by the investigator.
Restrictions:	For Research Use only

## Handling

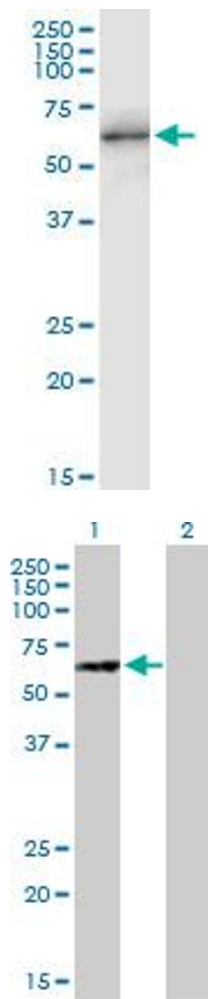
---

Buffer:	In 1x PBS, pH 7.4
Handling Advice:	Aliquot to avoid repeated freezing and thawing.
Storage:	-20 °C
Storage Comment:	Store at -20°C or lower. Aliquot to avoid repeated freezing and thawing.



### Immunofluorescence

**Image 1.** Immunofluorescence of purified MaxPab antibody to NUPL1 on HeLa cell. [antibody concentration 10 ug/ml]



### Western Blotting

**Image 2.** NUPL1 MaxPab polyclonal antibody. Western Blot analysis of NUPL1 expression in HepG2.

### Western Blotting

**Image 3.** Western Blot analysis of NUPL1 expression in transfected 293T cell line by NUPL1 MaxPab polyclonal antibody.

Lane 1: NUPL1 transfected lysate(65.89 KDa).

Lane 2: Non-transfected lysate.