

Datasheet for ABIN523261
anti-ZEB2 antibody (AA 1-1214)



[Go to Product page](#)

1 Image

1 Publication

Overview

Quantity:	100 µg
Target:	ZEB2
Binding Specificity:	AA 1-1214
Reactivity:	Human
Host:	Rabbit
Clonality:	Polyclonal
Conjugate:	This ZEB2 antibody is un-conjugated
Application:	Western Blotting (WB)

Product Details

Purpose:	Rabbit polyclonal antibody raised against a full-length human ZEB2 protein.
Immunogen:	ZEB2 (NP_055610.1, 1 a.a. ~ 1214 a.a) full-length human protein.
Sequence:	MKQPIMADGP RCKRRKQANP RRKNVVNYDN VVDTGSETDE EDKLHIAEDD GIANPLDQET SPASVPNHES SPHVSQALLP REEEDEIRE GGVEHPWHNN EILQASVDGP EEMKEDYDTM GPEATIQTAI NNGTVKNANC TSDFEFYFAK RKL EERDGH A VSIEEYLQRS DTAIYPEAP EELSRLGTPE ANGQEENDLP PGTPDAFAQL LTCPCDRGY KRLTSLKEHI KYRHEKNEEN FSCPLCSYTF AYRTQLERHM VTHKPGTDQH QMLTQGAGNR KFKCTECGKA FKYKHHLKEH LRIHSGEKPY ECPNCKKRF S HSGSYSSHIS SKKCI GLISV NGRMRNNIKT GSSPNSVSSS PTNSAITQLR NKLENGKPLS MSEQTGLLKI KTEPLDFNDY KVL MATHGFS GTSPFMNGGL GATSPLGVHP SAQSPMQHLG VGMEAPLLGF PTMNSNLSEV QKVLQIVDNT VSRQKMDCKA EEISKLKG YH MKDPCSQPEE QGVTSPNIPP VGLPVVSHNG ATKSIIDYTL EKVN EAKACL QSLTTDSRRQ ISNIKKEKLR TLIDLVTDDK MIENHNISTP FSCQFCKESF PGPIPLHQHE

Product Details

RYLCKMNEEI KAVLQPHENI VPNKAGVFVD NKALLLSSVL SEKGMTSPIN PYKDHMMSVLK
AYYAMNMEPN SDELLKISIA VGLPQEFVKE WFEQRKVYQY SNSRSPSLER SSKPLAPNSN
PPTKDSLLPR SPVKPMDSIT SPSIAELHNS VTNCDPPLRL TKPSHFTNIK PVEKLDHSRS
NTPSPLNLSS TSSKNSHSSS YTPNSFSSEE LQAEPLDLSL PKQMKEPKSI IATKNKTKAS
SISLDHNSVS SSENSDEPL NLTFIKKEFS NSNNLDNKST NPVFSMNPFS AKPLYTALPP
QSAFPPATFM PPVQTSIPGL RPYPGLDQMS FLPHMAYTYP TGAATFADMQ QRRKYQRKQG
FQGELLDGAQ DYMSGLEDDMT DSDSCLSRKK IKKTESGMYA CDLCDKTFQK SSSLLRHKYE
HTGKRPHQCQ ICKKAFKHKH HLIHESRLHS GEKPYQCDKC GKRFSSHSGSY SQHMNHRYSY
CKREAEEREA AEREAREKGH LEPTELLMNR AYLQSITPQG YSDSEERESM PRDGESEKEH
EKEGEDGYGK LGRQDGDEEF EEEEESEENK SMDTDPETIR DEEETGDHSM DDSSEEDGKME
TKSDHEEDNM EDGM

Cross-Reactivity:	Human
Characteristics:	Antibody reactive against mammalian transfected lysate.

Target Details

Target:	ZEB2
Alternative Name:	ZEB2 (ZEB2 Products)
Background:	Full Gene Name: zinc finger E-box binding homeobox 2 Synonyms: KIAA0569,SIP-1,SIP1,SMADIP1,ZFHX1B
Gene ID:	9839
NCBI Accession:	NM_014795
Pathways:	Tube Formation

Application Details

Application Notes:	Optimal working dilution should be determined by the investigator.
Restrictions:	For Research Use only

Handling

Buffer:	In 1x PBS, pH 7.4
Handling Advice:	Aliquot to avoid repeated freezing and thawing.
Storage:	-20 °C

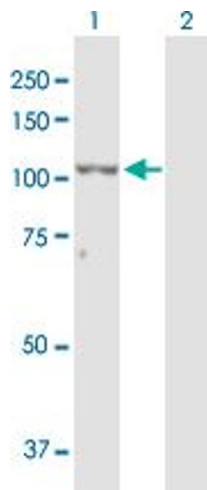
Handling

Storage Comment: Store at -20°C or lower. Aliquot to avoid repeated freezing and thawing.

Publications

Product cited in: Kumar, Kotlyarevska, Dejkmaron, Reddy, Lu, Bhojani, Menon et al.: "Growth hormone (GH)-dependent expression of a natural antisense transcript induces zinc finger E-box-binding homeobox 2 (ZEB2) in the glomerular podocyte: a novel action of gh with implications for ..." in: **The Journal of biological chemistry**, Vol. 285, Issue 41, pp. 31148-56, (2010) ([PubMed](#)).

Images



Western Blotting

Image 1. Western Blot analysis of ZEB2 expression in transfected 293T cell line by ZEB2 MaxPab polyclonal antibody.

Lane 1: ZEB2 transfected lysate(136.40 kDa).

Lane 2: Non-transfected lysate.