



[Go to Product page](#)

Datasheet for ABIN523266

## anti-**PLEKHM1** antibody (AA 957-1056)

### 1 Image

#### Overview

Quantity:	100 µg
Target:	PLEKHM1
Binding Specificity:	AA 957-1056
Reactivity:	Human
Host:	Mouse
Clonality:	Monoclonal
Conjugate:	This PLEKHM1 antibody is un-conjugated
Application:	ELISA

#### Product Details

Purpose:	Mouse monoclonal antibody raised against a partial recombinant PLEKHM1.
Immunogen:	PLEKHM1 (AAH64361, 957 a.a. ~ 1056 a.a) partial recombinant protein with GST tag. MW of the GST tag alone is 26 KDa.
Sequence:	PHRFSVADLQ QIADGVYEGF LKALIEFASQ HVYHCDLCTQ RGFICQICQH HDIIFPFEPD TTVRCAECKT VFHQSCQAVV KKGCPRCARR RKYQEQNIFA
Clone:	1C9
Isotype:	IgG2b
Cross-Reactivity:	Human
Characteristics:	Antibody Reactive Against Recombinant Protein.

## Target Details

Target:	PLEKHM1
Alternative Name:	PLEKHM1 ( <a href="#">PLEKHM1 Products</a> )
Background:	Full Gene Name: pleckstrin homology domain containing, family M (with RUN domain) member 1 Synonyms: AP162,B2,KIAA0356,OPTB6
Gene ID:	9842

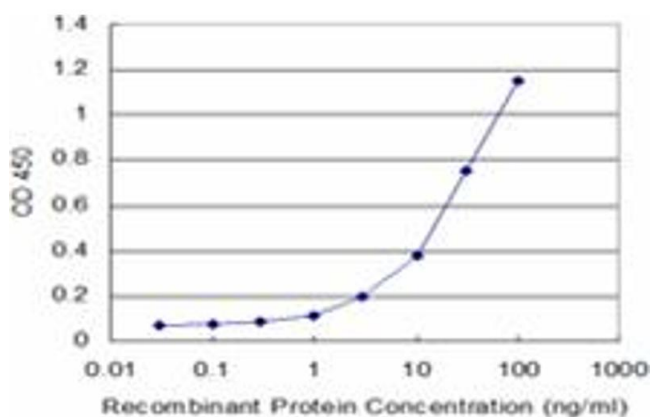
## Application Details

Application Notes:	Optimal working dilution should be determined by the investigator.
Restrictions:	For Research Use only

## Handling

Buffer:	In 1x PBS, pH 7.4
Handling Advice:	Aliquot to avoid repeated freezing and thawing.
Storage:	-20 °C
Storage Comment:	Store at -20°C or lower. Aliquot to avoid repeated freezing and thawing.

## Images



### ELISA

**Image 1.** Detection limit for recombinant GST tagged PLEKHM1 is approximately 1ng/ml as a capture antibody.