



Datasheet for ABIN523274  
**anti-C2CD2L antibody (AA 1-706)**



[Go to Product page](#)

1 Image

Overview

Quantity:	50 µg
Target:	C2CD2L
Binding Specificity:	AA 1-706
Reactivity:	Human
Host:	Mouse
Clonality:	Polyclonal
Conjugate:	This C2CD2L antibody is un-conjugated
Application:	Western Blotting (WB)

Product Details

Purpose:	Mouse polyclonal antibody raised against a full-length human TMEM24 protein.
Immunogen:	TMEM24 (AAH22219, 1 a.a. ~ 706 a.a) full-length human protein.
Sequence:	MDPGWGQRDV GWAALLILFA ASLLTVFAWL LQYARGLWLA RARGDRGPGP ALAGEPAGSL RELGVWRSLL RLRATRAGAA EEPGVRGLLA SLFAFKSFRE NWQRAWVRAL NEQACRNGSS IQIAFEEVPQ LPPRASISHV TCVDQSEHTM VLRCQLSAEE VRFPVSVTQQ SPAAVSMETY HVTLTLPPTQ LEVNLEEIPG EGLLISWAFT DRPDLSTVL PKLQARERGE EQVELSTIEE LIKDAIVSTQ PAMMVNLRAC SAPGGLVPSE KPPMMPQAQP AIRPNRFL RQLRASHLGN ELEGTEELCC VAELDNPMQQ KWTKPARAGS EVEWTEDLAL DLGPQSRELT LKVLRSSSCG DTELLGQATL PVGSPSRPLS RRQLCLTPG PGKALGPAAT MAVELHYEEG SPRNLGTPTS STPRPSITPT KKIELDRTIM PDGTIVTTVT TVQSRPRIDG KLDSPSRSPS KVEVTEKTTT VLSSESGPSN TSHSSSRDSH LSNGLDPVAE TAIRQLTEPS GRVAKKTPTK RSTLIISGVS KVPIAQDELA LSLGYAASLE ASVQDDAGTS GGPSSPPSDP PAMSPGPLDA LSSPTSVQEA

## Product Details

---

DETRSDISE RPSVDDIESE TGSTGALETR SLKDHKVSFL RSGTKLIFRR RPRQKEAGLS  
QSHDDLSNAT ATPSVRKKAG SFSRRLIKRF SFKSKPKANG NPSPQL

Cross-Reactivity: Human

Characteristics: Antibody reactive against mammalian transfected lysate.

## Target Details

---

Target: C2CD2L

Alternative Name: C2CD2L ([C2CD2L Products](#))

Background: Full Gene Name: C2CD2-like  
Synonyms: DLNB23,KIAA0285,TMEM24

Gene ID: 9854

## Application Details

---

Application Notes: Optimal working dilution should be determined by the investigator.

Restrictions: For Research Use only

## Handling

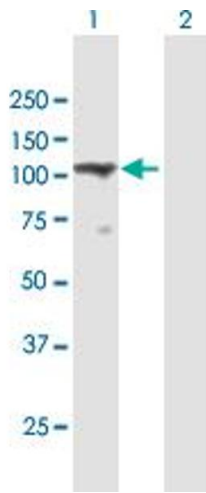
---

Buffer: In 1x PBS, pH 7.4

Handling Advice: Aliquot to avoid repeated freezing and thawing.

Storage: -20 °C

Storage Comment: Store at -20°C or lower. Aliquot to avoid repeated freezing and thawing.



### Western Blotting

**Image 1.** Western Blot analysis of TMEM24 expression in transfected 293T cell line by TMEM24 MaxPab polyclonal antibody.

Lane 1: TMEM24 transfected lysate(77.66 KDa).

Lane 2: Non-transfected lysate.