



[Go to Product page](#)

Datasheet for ABIN523277  
**anti-MAGI2 antibody (AA 519-628)**

2 Images

Overview

Quantity:	100 µg
Target:	MAGI2
Binding Specificity:	AA 519-628
Reactivity:	Human
Host:	Mouse
Clonality:	Monoclonal
Conjugate:	This MAGI2 antibody is un-conjugated
Application:	ELISA, Western Blotting (WB)

Product Details

Purpose:	Mouse monoclonal antibody raised against a partial recombinant MAGI2.
Immunogen:	MAGI2 (NP_036433, 519 a.a. ~ 628 a.a) partial recombinant protein with GST tag. MW of the GST tag alone is 26 KDa.
Sequence:	PANSMVPPLA IMERPPVMV NGRHNYETYL EYISRTSQSV PDITDRPPHS LHSMPDGGQL DGTYPVVHD DNVSMASGA TQAEMLTLI VKGAQGGFT IADSPTGQRV
Clone:	6F5
Isotype:	IgG1
Cross-Reactivity:	Human
Characteristics:	Antibody Reactive Against Recombinant Protein.

## Target Details

Target:	MAGI2
Alternative Name:	MAGI2 ( <a href="#">MAGI2 Products</a> )
Background:	Full Gene Name: membrane associated guanylate kinase, WW and PDZ domain containing 2 Synonyms: ACVRIP1,AIP1,ARIP1,MAGI-2,SSCAM
Gene ID:	9863
NCBI Accession:	<a href="#">NM_012301</a>
Pathways:	<a href="#">Neurotrophin Signaling Pathway</a>

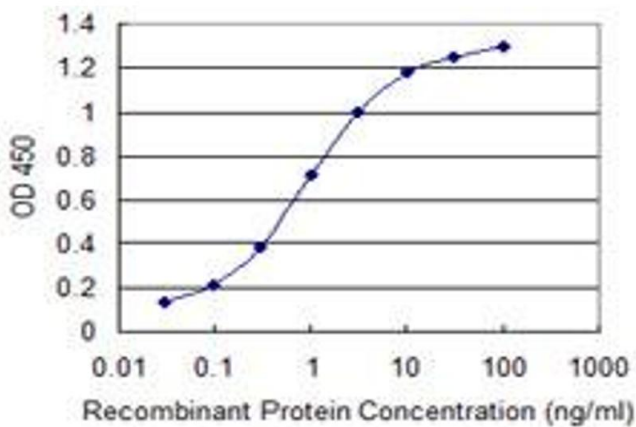
## Application Details

Application Notes:	Optimal working dilution should be determined by the investigator.
Restrictions:	For Research Use only

## Handling

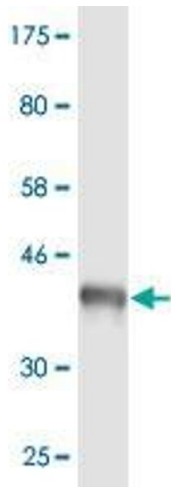
Buffer:	In 1x PBS, pH 7.4
Handling Advice:	Aliquot to avoid repeated freezing and thawing.
Storage:	-20 °C
Storage Comment:	Store at -20°C or lower. Aliquot to avoid repeated freezing and thawing.

## Images



### ELISA

**Image 1.** Detection limit for recombinant GST tagged MAGI2 is 0.03 ng/ml as a capture antibody.



### Western Blotting

**Image 2.** Western Blot detection against Immunogen (37.84 kDa).