



Datasheet for ABIN523376
anti-NR2E3 antibody (AA 1-410)



[Go to Product page](#)

1 Image

Overview

Quantity:	100 µg
Target:	NR2E3
Binding Specificity:	AA 1-410
Reactivity:	Human
Host:	Rabbit
Clonality:	Polyclonal
Conjugate:	This NR2E3 antibody is un-conjugated
Application:	Western Blotting (WB)

Product Details

Purpose:	Rabbit polyclonal antibody raised against a full-length human NR2E3 protein.
Immunogen:	NR2E3 (NP_055064.1, 1 a.a. ~ 410 a.a) full-length human protein.
Sequence:	METRPTALMS STVAAAAPAA GAASRKESPG RWGLGEDPTG VSPSLQCRVC GDSSSGKHYG IYACNGCSGF FKRSVRRRLI YRCQVGAGMC PVDKAHRNQC QACRLKKCLQ AGMNQDAVQN ERQPRSTAQV HLDSEMSNTE SRPESLVAPP APAGRSRPGP TPMSAARALG HHFMASLITA ETCAKLEPED ADENIDVTSN DPEFPSSPYS SSSPCGLDSI HETSARLLFM AVKWAKNLPV FSSLPFRDQV ILLEEAWSEL FLLGAIQWSL PLDSCPLLAP PEASAAGGAQ GRLTLASMET RVLQETISRF RALAVDPTEF ACMKALVLFK PETRGLKDPE HVEALQDQSQ VMLSQHSKAH HPSQPVRFGK LLLLLPSLRF ITAERIELLF FRKTIGNTPM EKLLCDMFKN
Cross-Reactivity:	Human
Characteristics:	Antibody reactive against mammalian transfected lysate.

Target Details

Target: NR2E3

Alternative Name: NR2E3 ([NR2E3 Products](#))

Background: Full Gene Name: nuclear receptor subfamily 2, group E, member 3
Synonyms: ESCS,MGC49976,PNR,RNR,RP37,rd7

Gene ID: 10002

NCBI Accession: [NM_014249](#)

Pathways: [Nuclear Receptor Transcription Pathway](#), [Steroid Hormone Mediated Signaling Pathway](#)

Application Details

Application Notes: Optimal working dilution should be determined by the investigator.

Restrictions: For Research Use only

Handling

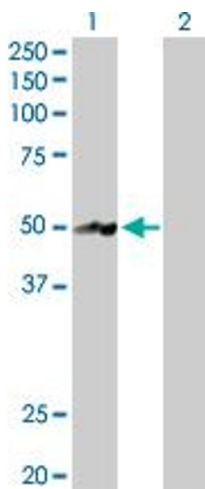
Buffer: In 1x PBS, pH 7.4

Handling Advice: Aliquot to avoid repeated freezing and thawing.

Storage: -20 °C

Storage Comment: Store at -20°C or lower. Aliquot to avoid repeated freezing and thawing.

Images



Western Blotting

Image 1. Western Blot analysis of NR2E3 expression in transfected 293T cell line by NR2E3 MaxPab polyclonal antibody.

Lane 1: NR2E3 transfected lysate(44.70 kDa).

Lane 2: Non-transfected lysate.