

Datasheet for ABIN523396
anti-BCL2L10 antibody (AA 1-204)



[Go to Product page](#)

1 Image

Overview

| | |
|----------------------|--|
| Quantity: | 100 µg |
| Target: | BCL2L10 |
| Binding Specificity: | AA 1-204 |
| Reactivity: | Human |
| Host: | Rabbit |
| Clonality: | Polyclonal |
| Conjugate: | This BCL2L10 antibody is un-conjugated |
| Application: | Western Blotting (WB) |

Product Details

| | |
|-------------------|--|
| Purpose: | Rabbit polyclonal antibody raised against a full-length human BCL2L10 protein. |
| Immunogen: | BCL2L10 (NP_065129.1, 1 a.a. ~ 204 a.a) full-length human protein. |
| Sequence: | MVDQLRERTT MADPLRERTE LLLADYLGYC AREPGTPEPA PSTPEAAVLR SAAARLRQIH RSFFSAYLGY PGNRFELVAL MADSVLSDSP GPTWGRVVTL VTFAGTLER GPLVTARWKK WGFQPRLKEQ EGDVARDCQR LVALLSSRLM GQHRAWLQAQ GGWDGFCHFF RTPFPLAFWR KQLVQAFLSC LLTTAFIYLW TRLL |
| Cross-Reactivity: | Human |
| Characteristics: | Antibody reactive against mammalian transfected lysate. |

Target Details

| | |
|---------|---------|
| Target: | BCL2L10 |
|---------|---------|

Target Details

| | |
|-------------------|--|
| Alternative Name: | BCL2L10 (BCL2L10 Products) |
| Background: | Full Gene Name: BCL2-like 10 (apoptosis facilitator) Synonyms: BCL-B,Boo,Diva,MGC129810,MGC129811 |
| Gene ID: | 10017 |
| NCBI Accession: | NM_020396 |
| Pathways: | Positive Regulation of Endopeptidase Activity |

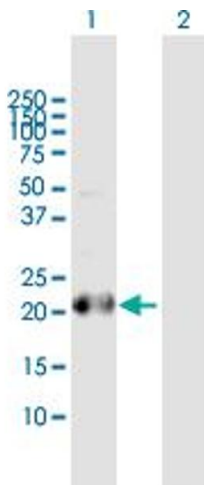
Application Details

| | |
|--------------------|--|
| Application Notes: | Optimal working dilution should be determined by the investigator. |
| Restrictions: | For Research Use only |

Handling

| | |
|------------------|--|
| Buffer: | In 1x PBS, pH 7.4 |
| Handling Advice: | Aliquot to avoid repeated freezing and thawing. |
| Storage: | -20 °C |
| Storage Comment: | Store at -20°C or lower. Aliquot to avoid repeated freezing and thawing. |

Images



Western Blotting

Image 1. Western Blot analysis of BCL2L10 expression in transfected 293T cell line by BCL2L10 MaxPab polyclonal antibody.

Lane 1: BCL2L10 transfected lysate(23.20 KDa).

Lane 2: Non-transfected lysate.