



[Go to Product page](#)

Datasheet for ABIN523397
anti-BCL2L10 antibody (AA 1-92)

3 Images

Overview

Quantity:	100 µg
Target:	BCL2L10
Binding Specificity:	AA 1-92
Reactivity:	Human
Host:	Mouse
Clonality:	Monoclonal
Conjugate:	This BCL2L10 antibody is un-conjugated
Application:	Western Blotting (WB), ELISA

Product Details

Purpose:	Mouse monoclonal antibody raised against a partial recombinant BCL2L10.
Immunogen:	BCL2L10 (NP_065129, 1 a.a. ~ 92 a.a) partial recombinant protein with GST tag. MW of the GST tag alone is 26 KDa.
Sequence:	MVDQLRERTT MADPLRERTE LLLADYLGYC AREPGTPEPA PSTPEAAVLR SAAARLRQIH RSFFSAYLGY PGNRFELVAL MADSVLSDSP GP
Clone:	1B11
Isotype:	IgG2b
Cross-Reactivity:	Human
Characteristics:	Antibody Reactive Against Recombinant Protein.

Target Details

Target:	BCL2L10
Alternative Name:	BCL2L10 (BCL2L10 Products)
Background:	Full Gene Name: BCL2-like 10 (apoptosis facilitator) Synonyms: BCL-B,Boo,Diva,MGC129810,MGC129811
Gene ID:	10017
NCBI Accession:	NM_020396
Pathways:	Positive Regulation of Endopeptidase Activity

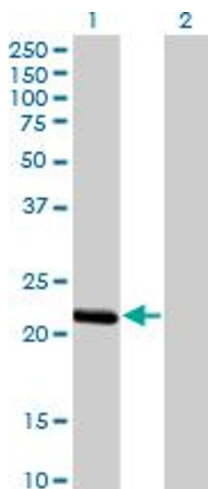
Application Details

Application Notes:	Optimal working dilution should be determined by the investigator.
Restrictions:	For Research Use only

Handling

Buffer:	In 1x PBS, pH 7.4
Handling Advice:	Aliquot to avoid repeated freezing and thawing.
Storage:	-20 °C
Storage Comment:	Store at -20°C or lower. Aliquot to avoid repeated freezing and thawing.

Images

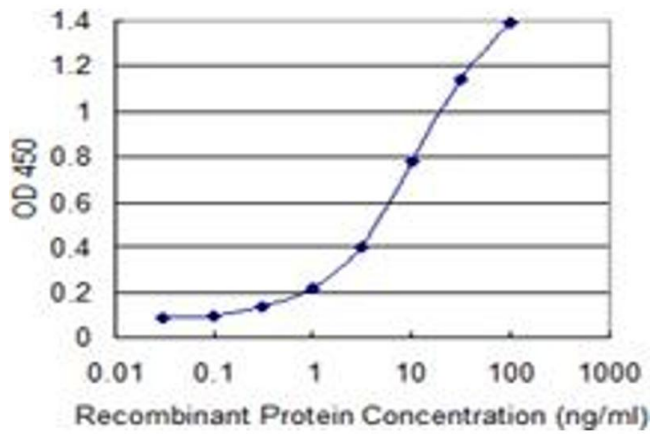


Western Blotting

Image 1. Western Blot analysis of BCL2L10 expression in transfected 293T cell line by BCL2L10 monoclonal antibody (M03), clone 1B11.

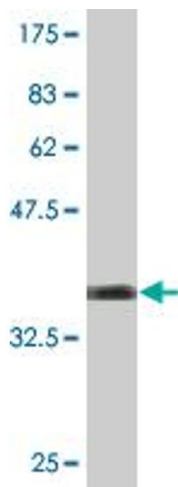
Lane 1: BCL2L10 transfected lysate(23.2 KDa).

Lane 2: Non-transfected lysate.



ELISA

Image 2. Detection limit for recombinant GST tagged BCL2L10 is 0.1 ng/ml as a capture antibody.



Western Blotting

Image 3. Western Blot detection against Immunogen (35.86 kDa).