



Datasheet for ABIN523413  
**anti-SH2D3C antibody (AA 1-703)**



[Go to Product page](#)

1 Image

Overview

Quantity:	100 µg
Target:	SH2D3C
Binding Specificity:	AA 1-703
Reactivity:	Human
Host:	Mouse
Clonality:	Monoclonal
Conjugate:	This SH2D3C antibody is un-conjugated
Application:	ELISA, Immunofluorescence (IF)

Product Details

Purpose:	Mouse monoclonal antibody raised against a full-length recombinant SH2D3C.
Immunogen:	SH2D3C (AAH27962, 1 a.a. ~ 703 a.a) full-length recombinant protein with GST tag. MW of the GST tag alone is 26 KDa.
Sequence:	MTAVGRRCPA LGSRGAGPEP EAGSDYVKFS KEKYILDSSP EKLHKELEEE LKLSSTDLRS HAWYHGRIPIR EVSETLVQRN GDFLIRDSLT SLGDYVLTTCR WRNQALHFKI NKVVVKAGES YTHIQYLFEQ ESFDHVPALV RYHVGSRKAV SEQSGAIYC PVNRTFPLRY LEASYGLGQG SSKPASPVPSP SGPKGSHMKR RSVTMTDGLT ADKVTRSDGC PTSTSLPRPR DSIRSCALSM DQIPDLHSPM SPISESPSSP AYSTVTRVHA APAAPSATAL PASPVARRSS EPQLCPGSAP KTHGESDKGP HTSPSHTLGK ASPSPSLSSY SDPDSGHYCQ LQPPVRSRE WAATETSSQQ ARSYGERLKE LSENGAPEGD WGKTFTVPIV EVTSSFNPAT FQSLIPRDN RPLEVGLLRK VKELLAEVDA RTLARHVTKV DCLVARILGV TKEMQTLMGV RWGMELLTLP HGRQLRLDLL ERFHTMSIML AVDILGCTGS AEERAALLHK TIQLAAELRG TMGNMFSFAA VMGALDMAQI

## Product Details

---

SRLEQTVVTL RQRHTEGAIL YEKKLKPFLK SLNEGKEGPP LSNTTFPHVL PLITLLECDS  
APPEGPEPWG STEHGVEVVL AHLEAARTVA HHGGLYHTNA EVKLQGFQAR PELLEVFSTE  
FQMRLWGSQ GASSSQARRY EKFDKLTAL SHKLEPAVRS SEL

Clone:	2B4
Isotype:	IgG1
Cross-Reactivity:	Human
Characteristics:	Antibody Reactive Against Recombinant Protein.

## Target Details

---

Target:	SH2D3C
Alternative Name:	SH2D3C ( <a href="#">SH2D3C Products</a> )
Background:	Full Gene Name: SH2 domain containing 3C Synonyms: CHAT,FLJ39664,NSP3,PRO34088
Gene ID:	10044

## Application Details

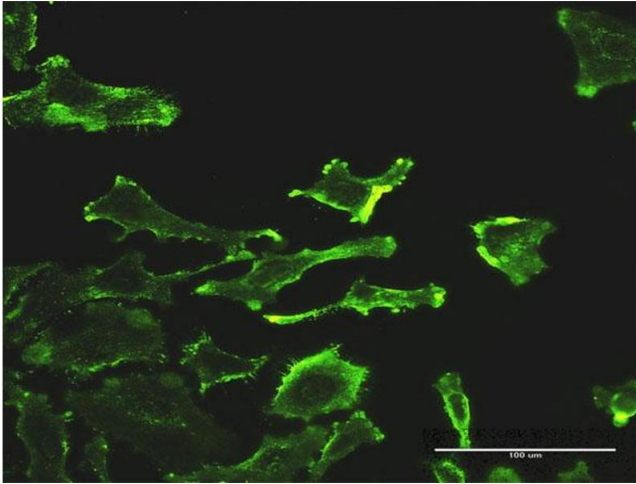
---

Application Notes:	Optimal working dilution should be determined by the investigator.
Restrictions:	For Research Use only

## Handling

---

Buffer:	In 1x PBS, pH 7.4
Handling Advice:	Aliquot to avoid repeated freezing and thawing.
Storage:	-20 °C
Storage Comment:	Store at -20°C or lower. Aliquot to avoid repeated freezing and thawing.



### Immunofluorescence

**Image 1.** Immunofluorescence of monoclonal antibody to SH2D3C on HeLa cell. [antibody concentration 30 ug/ml]