



[Go to Product page](#)

Datasheet for ABIN523426  
**anti-AP1m2 antibody (AA 1-423)**

1 Image

Overview

Quantity:	50 µg
Target:	AP1m2
Binding Specificity:	AA 1-423
Reactivity:	Human
Host:	Mouse
Clonality:	Polyclonal
Conjugate:	This AP1m2 antibody is un-conjugated
Application:	Western Blotting (WB)

Product Details

Purpose:	Mouse polyclonal antibody raised against a full-length human AP1M2 protein.
Immunogen:	AP1M2 (NP_005489, 1 a.a. ~ 423 a.a) full-length human protein.
Sequence:	MSASAVFILD VKGKPLISRN YKGDVAMSKI EHFMPLLVQR EEEGALAPLL SHGQVHFLWI KHSNLYLVAT TSKNANASLV YSFLYKTIEV FCEYFKELEE ESIRDNFVIV YELLDELMDF GFPQTTDSKI LQEYITQSN KLETGKSRVP PVTNAVSWR SEGIKYKKNE VFIDVIESVN LLVNANGSVL LSEIVGTIKL KVFLSGMPEL RLGLNDRVLF ELTGRSKNKS VELEDVKFHQ CVRLSRFDND RTISFIPPDG DFELMSYRLS TQVKPLIWIE SVIEKFSHSR VEIMVKAKGQ FKKQSVANGV EISVPVPSDA DSPRFKTSVG SAKYVPERNV VIWSIKSFPG GKEYLMRAHF GLPSVEKEEV EGRPPIGVKF EIPYFTVSGI QVRYMKIIEK SGYQALPWVR YITQSGDYQL RTS
Cross-Reactivity:	Human
Characteristics:	Antibody reactive against mammalian transfected lysate.

## Target Details

Target:	AP1m2
Alternative Name:	AP1M2 ( <a href="#">AP1m2 Products</a> )
Background:	Full Gene Name: adaptor-related protein complex 1, mu 2 subunit Synonyms: AP1-mu2,HSMU1B,MU-1B,MU1B,mu2
Gene ID:	10053
NCBI Accession:	<a href="#">NM_005498</a>

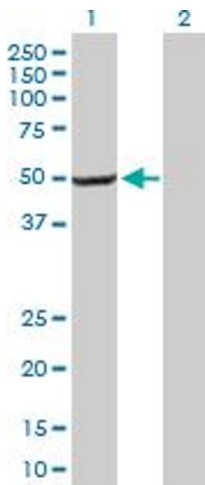
## Application Details

Application Notes:	Optimal working dilution should be determined by the investigator.
Restrictions:	For Research Use only

## Handling

Buffer:	In 1x PBS, pH 7.4
Handling Advice:	Aliquot to avoid repeated freezing and thawing.
Storage:	-20 °C
Storage Comment:	Store at -20°C or lower. Aliquot to avoid repeated freezing and thawing.

## Images



### Western Blotting

**Image 1.** Western Blot analysis of AP1M2 expression in transfected 293T cell line by AP1M2 MaxPab polyclonal antibody.

Lane 1: AP1M2 transfected lysate(46.53 KDa).

Lane 2: Non-transfected lysate.