



[Go to Product page](#)

Datasheet for ABIN523458  
**anti-EDIL3 antibody (AA 1-480)**

1 Image

1 Publication

### Overview

Quantity:	50 µg
Target:	EDIL3 (DEL1)
Binding Specificity:	AA 1-480
Reactivity:	Human
Host:	Mouse
Clonality:	Polyclonal
Conjugate:	This EDIL3 antibody is un-conjugated
Application:	Western Blotting (WB)

### Product Details

Purpose:	Mouse polyclonal antibody raised against a full-length human EDIL3 protein.
Immunogen:	EDIL3 (NP_005702.3, 1 a.a. ~ 480 a.a) full-length human protein.
Sequence:	MKRSVAVWLL VGLSLGVPQF GKGDICDPNP CENGGICLPG LADGSFSCEC PDGFTDPNCS SVVEVASDEE EPTSAGPCTP NPCHNGGTCE ISEAYRGDTF IGYVCKCPRG FNGIHCQHNI NECEVEPCKN GGICTDLVAN YSCECPGEFM GRNCQYKCSG PLGIEGGIIS NQQITASSTH RALFGLQKWY PYYARLNKKG LINAWTAAEN DRWPWIQINL QRKMRVTGVI TQGAKRIGSP EYIKSYKIAY SNDGKTWAMY KVKG TNEDMV FRGNIDNNTP YANSFTPIIK AQYVRLYPQV CRRHCTLRME LLGCELSGCS EPLGMKSGHI QDYQITASSI FRTLNMDFMFT WEPRKARLDK QGKVNAWTSG HNDQSQWLQV DLLVPTKVTG IITQGAKDFG HVQFVGSYKL AYSNDGEHWT VYQDEKQRKD KVFQGNFDND THRKNVIDPP IYARHIRILP WSWYGRITLR SELLGCTEEE
Cross-Reactivity:	Human

## Product Details

---

Characteristics: Antibody reactive against mammalian transfected lysate.

## Target Details

---

Target: EDIL3 (DEL1)

Alternative Name: EDIL3 ([DEL1 Products](#))

Background: Full Gene Name: EGF-like repeats and discoidin I-like domains 3  
Synonyms: DEL1,MGC26287

Gene ID: 10085

NCBI Accession: [NM\\_005711](#)

## Application Details

---

Application Notes: Optimal working dilution should be determined by the investigator.

Restrictions: For Research Use only

## Handling

---

Buffer: In 1x PBS, pH 7.4

Handling Advice: Aliquot to avoid repeated freezing and thawing.

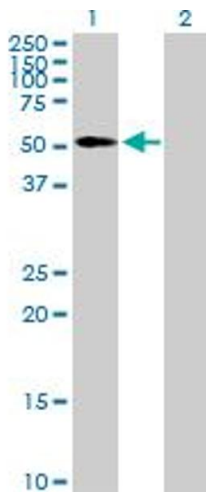
Storage: -20 °C

Storage Comment: Store at -20°C or lower. Aliquot to avoid repeated freezing and thawing.

## Publications

---

Product cited in: in: ([PubMed](#)).



### Western Blotting

**Image 1.** Western Blot analysis of EDIL3 expression in transfected 293T cell line by EDIL3 MaxPab polyclonal antibody.

Lane 1: EDIL3 transfected lysate(52.8 KDa).

Lane 2: Non-transfected lysate.