



Datasheet for ABIN523459  
**anti-EDIL3 antibody (AA 101-199)**



[Go to Product page](#)

4 Images

Overview

Quantity:	100 µg
Target:	EDIL3 (DEL1)
Binding Specificity:	AA 101-199
Reactivity:	Human
Host:	Mouse
Clonality:	Monoclonal
Conjugate:	This EDIL3 antibody is un-conjugated
Application:	Western Blotting (WB), ELISA, Immunofluorescence (IF)

Product Details

Purpose:	Mouse monoclonal antibody raised against a partial recombinant EDIL3.
Immunogen:	EDIL3 (NP_005702, 101 a.a. ~ 199 a.a) partial recombinant protein with GST tag. MW of the GST tag alone is 26 KDa.
Sequence:	IGYVCKCPRG FNGIHCQHNI NECEVEPCKN GGICTDLVAN YSCECPGEFM GRNCQYKCSG PLGIEGGIIS NQQTASSTH RALFGLQKWY PYYARLNKK
Clone:	4C9
Isotype:	IgG2a
Cross-Reactivity:	Human
Characteristics:	Antibody Reactive Against Recombinant Protein.

## Target Details

Target:	EDIL3 (DEL1)
Alternative Name:	EDIL3 ( <a href="#">DEL1 Products</a> )
Background:	Full Gene Name: EGF-like repeats and discoidin I-like domains 3 Synonyms: DEL1,MGC26287
Gene ID:	10085
NCBI Accession:	<a href="#">NM_005711</a>

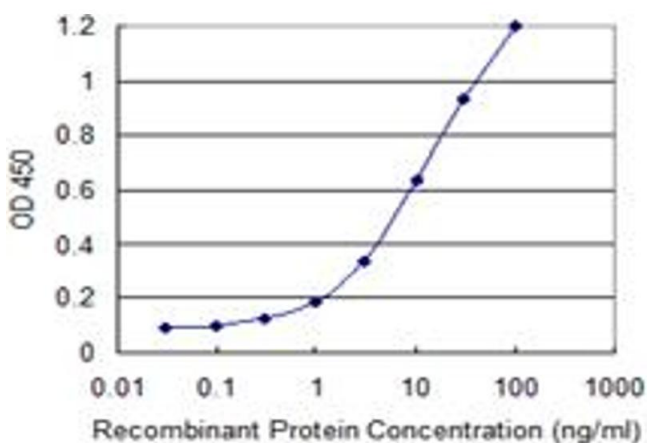
## Application Details

Application Notes:	Optimal working dilution should be determined by the investigator.
Restrictions:	For Research Use only

## Handling

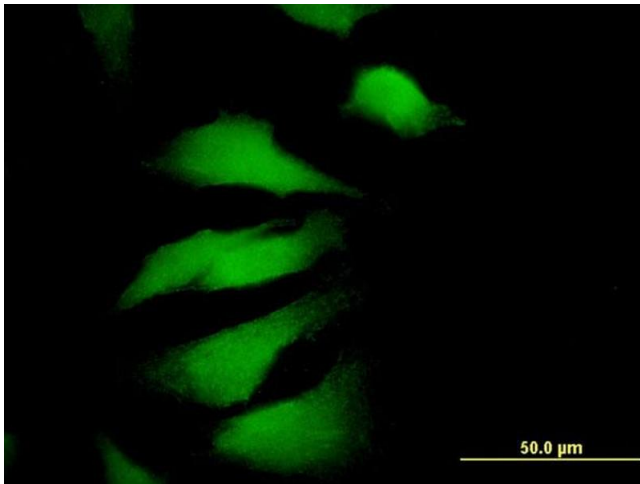
Buffer:	In 1x PBS, pH 7.4
Handling Advice:	Aliquot to avoid repeated freezing and thawing.
Storage:	-20 °C
Storage Comment:	Store at -20°C or lower. Aliquot to avoid repeated freezing and thawing.

## Images



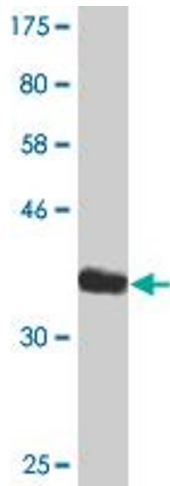
### ELISA

**Image 1.** Detection limit for recombinant GST tagged EDIL3 is 0.1 ng/ml as a capture antibody.



### Immunofluorescence

**Image 2.** Immunofluorescence of monoclonal antibody to EDIL3 on HeLa cell. [antibody concentration 10 ug/ml]



### Western Blotting

**Image 3.** Western Blot detection against Immunogen (36.63 kDa).

Please check the [product details page](#) for more images. Overall 4 images are available for ABIN523459.