



[Go to Product page](#)

Datasheet for ABIN523485  
**anti-SGK2 antibody (AA 293-367)**

4 Images

Overview

Quantity:	100 µg
Target:	SGK2
Binding Specificity:	AA 293-367
Reactivity:	Human
Host:	Mouse
Clonality:	Monoclonal
Conjugate:	This SGK2 antibody is un-conjugated
Application:	Western Blotting (WB), ELISA, Immunofluorescence (IF)

Product Details

Purpose:	Mouse monoclonal antibody raised against a partial recombinant SGK2.
Immunogen:	SGK2 (AAH65511, 293 a.a. ~ 367 a.a) partial recombinant protein with GST tag. MW of the GST tag alone is 26 KDa.
Sequence:	SPINWDDLYH KRLTPPFNPN VTGPADLKHF DPEFTQEAVS KSIGCTPDTV ASSSGASSAF LGFSYAPEDD DILDC
Clone:	2F6
Isotype:	IgG1
Cross-Reactivity:	Human
Characteristics:	Antibody Reactive Against Recombinant Protein.

## Target Details

Target:	SGK2
Alternative Name:	SGK2 ( <a href="#">SGK2 Products</a> )
Background:	Full Gene Name: serum/glucocorticoid regulated kinase 2 Synonyms: H-SGK2,dJ138B7.2
Gene ID:	10110

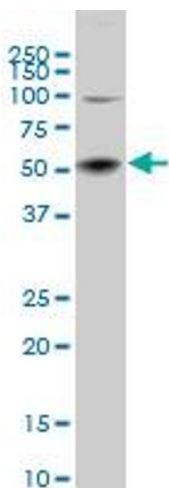
## Application Details

Application Notes:	Optimal working dilution should be determined by the investigator.
Restrictions:	For Research Use only

## Handling

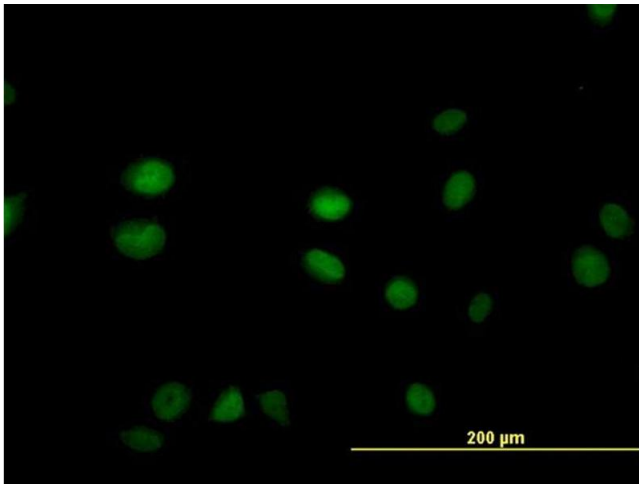
Buffer:	In 1x PBS, pH 7.4
Handling Advice:	Aliquot to avoid repeated freezing and thawing.
Storage:	-20 °C
Storage Comment:	Store at -20°C or lower. Aliquot to avoid repeated freezing and thawing.

## Images



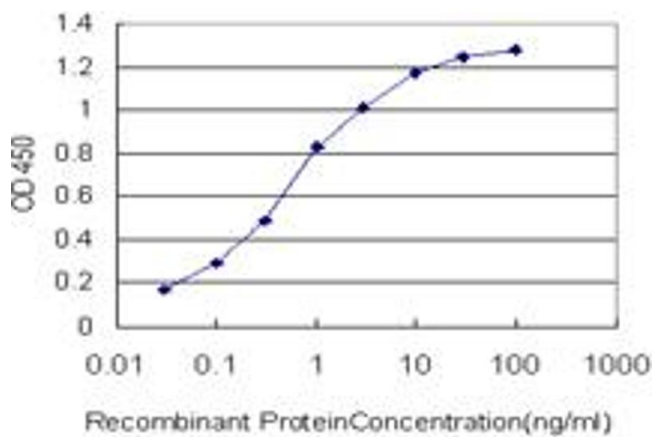
### Western Blotting

**Image 1.** SGK2 monoclonal antibody (M07), clone 2F6  
Western Blot analysis of SGK2 expression in IMR-32 .



### Immunofluorescence

**Image 2.** Immunofluorescence of monoclonal antibody to SGK2 on HeLa cell. [antibody concentration 30 ug/ml]



### ELISA

**Image 3.** Detection limit for recombinant GST tagged SGK2 is approximately 0.03ng/ml as a capture antibody.

Please check the [product details page](#) for more images. Overall 4 images are available for ABIN523485.