



[Go to Product page](#)

Datasheet for ABIN523491

anti-Enamelin antibody (AA 1043-1141)

2 Images

Overview

Quantity:	100 µg
Target:	Enamelin (ENAM)
Binding Specificity:	AA 1043-1141
Reactivity:	Human
Host:	Mouse
Clonality:	Monoclonal
Conjugate:	This Enamelin antibody is un-conjugated
Application:	Western Blotting (WB), ELISA

Product Details

Purpose:	Mouse monoclonal antibody raised against a partial recombinant ENAM.
Immunogen:	ENAM (NP_114095, 1043 a.a. ~ 1141 a.a) partial recombinant protein with GST tag. MW of the GST tag alone is 26 KDa.
Sequence:	ERQQRPSNI LHLPCFGSKL AKHHSSTTGT PSSDGRQSPF DGDSITPTEN PNTLVELATE EQFKSINVDP LDADEHSPFE FLQRGTNVQD QVQDCLLLQ
Clone:	2C12
Isotype:	IgG2a
Cross-Reactivity:	Human
Characteristics:	Antibody Reactive Against Recombinant Protein.

Target Details

Target:	Enamelin (ENAM)
Alternative Name:	ENAM (ENAM Products)
Background:	Full Gene Name: enamelin Synonyms: ADAI,AI1C,AIH2
Gene ID:	10117
NCBI Accession:	NM_031889

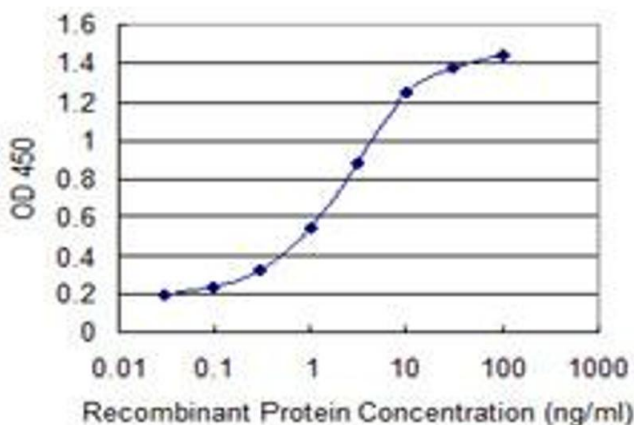
Application Details

Application Notes:	Optimal working dilution should be determined by the investigator.
Restrictions:	For Research Use only

Handling

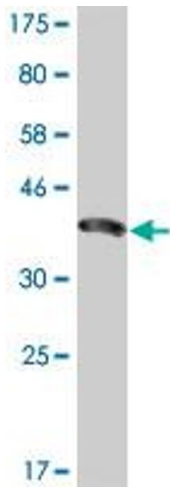
Buffer:	In 1x PBS, pH 7.4
Handling Advice:	Aliquot to avoid repeated freezing and thawing.
Storage:	-20 °C
Storage Comment:	Store at -20°C or lower. Aliquot to avoid repeated freezing and thawing.

Images



ELISA

Image 1. Detection limit for recombinant GST tagged ENAM is 0.03 ng/ml as a capture antibody.



Western Blotting

Image 2. Western Blot detection against Immunogen (36.63 kDa).