



[Go to Product page](#)

Datasheet for ABIN523517
anti-RBM12 antibody (AA 834-932)

3 Images

Overview

Quantity:	100 µg
Target:	RBM12
Binding Specificity:	AA 834-932
Reactivity:	Human
Host:	Mouse
Clonality:	Monoclonal
Conjugate:	This RBM12 antibody is un-conjugated
Application:	ELISA, Western Blotting (WB)

Product Details

Purpose:	Mouse monoclonal antibody raised against a partial recombinant RBM12.
Immunogen:	RBM12 (NP_006038.2, 834 a.a. ~ 932 a.a) partial recombinant protein with GST tag. MW of the GST tag alone is 26 KDa.
Sequence:	GPGPIHIGGP PGFASSSGKP GPTVIKIQNM PFTVSIIEIL DFFYGYQVIP GSVCLKYNEK GMPTGEAMVA FESRDEATAA VIDLNDRPIG SRKVKLVLG
Clone:	1D12
Isotype:	IgG1
Cross-Reactivity:	Human
Characteristics:	Antibody Reactive Against Recombinant Protein.

Target Details

Target:	RBM12
Alternative Name:	RBM12 (RBM12 Products)
Background:	Full Gene Name: RNA binding motif protein 12 Synonyms: HRIHFB2091,KIAA0765,SWAN
Gene ID:	10137
NCBI Accession:	NM_006047

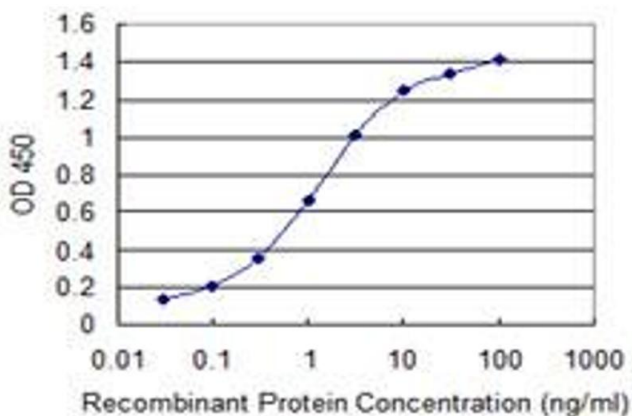
Application Details

Application Notes:	Optimal working dilution should be determined by the investigator.
Restrictions:	For Research Use only

Handling

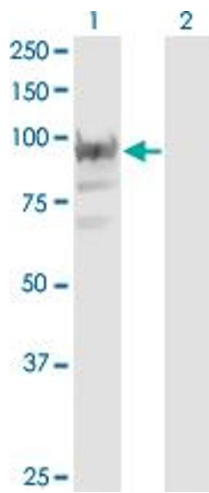
Buffer:	In 1x PBS, pH 7.4
Handling Advice:	Aliquot to avoid repeated freezing and thawing.
Storage:	-20 °C
Storage Comment:	Store at -20°C or lower. Aliquot to avoid repeated freezing and thawing.

Images



ELISA

Image 1. Detection limit for recombinant GST tagged RBM12 is 0.03 ng/ml as a capture antibody.

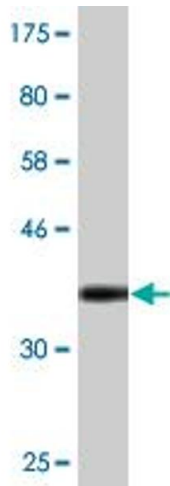


Western Blotting

Image 2. Western Blot analysis of RBM12 expression in transfected 293T cell line by RBM12 monoclonal antibody (M05), clone 1D12.

Lane 1: RBM12 transfected lysate (Predicted MW: 97.4 kDa).

Lane 2: Non-transfected lysate.



Western Blotting

Image 3. Western Blot detection against Immunogen (36.63 kDa).