



[Go to Product page](#)

Datasheet for ABIN523532
anti-Plexin C1 antibody (AA 250-348)

1 Image

Overview

Quantity:	100 µg
Target:	Plexin C1 (PLXNC1)
Binding Specificity:	AA 250-348
Reactivity:	Human
Host:	Mouse
Clonality:	Monoclonal
Conjugate:	This Plexin C1 antibody is un-conjugated
Application:	ELISA

Product Details

Purpose:	Mouse monoclonal antibody raised against a partial recombinant PLXNC1.
Immunogen:	PLXNC1 (NP_005752, 250 a.a. ~ 348 a.a) partial recombinant protein with GST tag. MW of the GST tag alone is 26 KDa.
Sequence:	PYNYTSGAAT GWPSMARIAQ STEVLFQGQA SLDCGHGHPD GRLLLLSSSL VEALDVWAGV FSAAAGEGQE RRSPTTTALC LFRMSEIQAR AKRVSWDFK
Clone:	1A12
Isotype:	IgG2b
Cross-Reactivity:	Human
Characteristics:	Antibody Reactive Against Recombinant Protein.

Target Details

Target:	Plexin C1 (PLXNC1)
Alternative Name:	PLXNC1 (PLXNC1 Products)
Background:	Full Gene Name: plexin C1 Synonyms: CD232,PLXN-C1,VESPR
Gene ID:	10154
NCBI Accession:	NM_005761

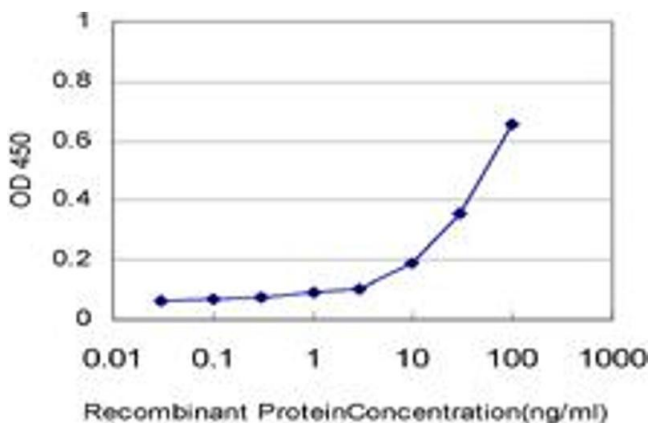
Application Details

Application Notes:	Optimal working dilution should be determined by the investigator.
Restrictions:	For Research Use only

Handling

Buffer:	In 1x PBS, pH 7.4
Handling Advice:	Aliquot to avoid repeated freezing and thawing.
Storage:	-20 °C
Storage Comment:	Store at -20°C or lower. Aliquot to avoid repeated freezing and thawing.

Images



ELISA

Image 1. Detection limit for recombinant GST tagged PLXNC1 is approximately 1 ng/ml as a capture antibody.