



[Go to Product page](#)

Datasheet for ABIN523537  
**anti-WASF2 antibody (AA 73-172)**

2 Images

Overview

Quantity:	100 µg
Target:	WASF2
Binding Specificity:	AA 73-172
Reactivity:	Human
Host:	Mouse
Clonality:	Monoclonal
Conjugate:	This WASF2 antibody is un-conjugated
Application:	ELISA, Western Blotting (WB)

Product Details

Purpose:	Mouse monoclonal antibody raised against a partial recombinant WASF2.
Immunogen:	WASF2 (NP_008921, 73 a.a. ~ 172 a.a) partial recombinant protein with GST tag. MW of the GST tag alone is 26 KDa.
Sequence:	DRLQVKVTVL DPKEEEVSLQ GINTRKAFRS STIQDQKLFV RNSLPVPLV TYNTCDTPPP LNNLTPYRDD GKEALKFYTD PSYFFDLWKE KMLQDTKDIM
Clone:	1F7
Isotype:	IgG2b
Cross-Reactivity:	Human
Characteristics:	Antibody Reactive Against Recombinant Protein.

## Target Details

Target:	WASF2
Alternative Name:	WASF2 ( <a href="#">WASF2 Products</a> )
Background:	Full Gene Name: WAS protein family, member 2 Synonyms: SCAR2,WAVE2,dJ393P12.2
Gene ID:	10163
NCBI Accession:	<a href="#">NM_006990</a>
Pathways:	<a href="#">RTK Signaling</a>

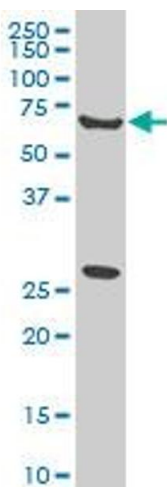
## Application Details

Application Notes:	Optimal working dilution should be determined by the investigator.
Restrictions:	For Research Use only

## Handling

Buffer:	In 1x PBS, pH 7.4
Handling Advice:	Aliquot to avoid repeated freezing and thawing.
Storage:	-20 °C
Storage Comment:	Store at -20°C or lower. Aliquot to avoid repeated freezing and thawing.

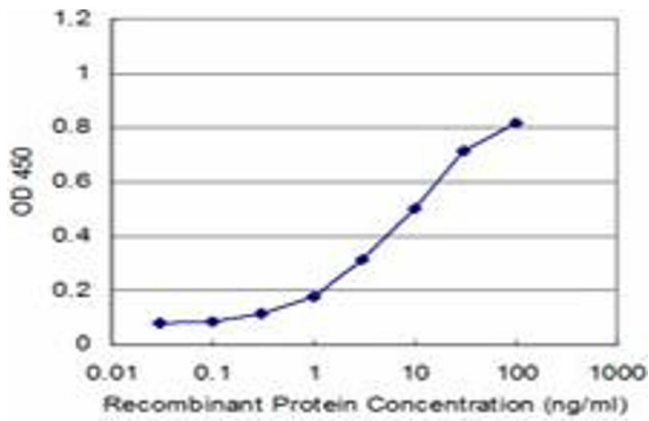
## Images



### Western Blotting

**Image 1.** WASF2 monoclonal antibody (M01), clone 1F7.

Western Blot analysis of WASF2 expression in HeLa .



## ELISA

**Image 2.** Detection limit for recombinant GST tagged WASF2 is approximately 0.3ng/ml as a capture antibody.