



Datasheet for ABIN523540
anti-sl25a13 antibody (AA 1-675)



[Go to Product page](#)

4 Images

Overview

Quantity:	100 µg
Target:	slc25a13
Binding Specificity:	AA 1-675
Reactivity:	Human
Host:	Rabbit
Clonality:	Polyclonal
Conjugate:	This slc25a13 antibody is un-conjugated
Application:	Western Blotting (WB)

Product Details

Purpose:	Rabbit polyclonal antibody raised against a full-length human SLC25A13 protein.
Immunogen:	SLC25A13 (NP_055066.1, 1 a.a. ~ 675 a.a) full-length human protein.
Sequence:	MAAAKVALTK RADPAELRTI FLKYASIEKN GEFMSPNDF VTRYLNIFGE SQPNPKTVEL LSGVVDQTKD GLISFQEFVA FESVLCAPDA LFMVAFQLFD KAGKGEVTFE DVKQVFGQTT IHQHIPFNWD SEFVQLHFGK ERKRHLTYAE FTQFLLEIQL EHAKQAFVQR DNARTGRVTA IDFRDIMVTI RPHVLLTPFVE ECLVAAAGGT TSHQVSFSYF NGFNSLLNNM ELIRKIYSTL AGTRKDVEVT KEEFVLAAQK FGQVTPMEVD ILFQLADLYE PRGRMTLADI ERIAPLEEGT LPFNLAEAQR QKASGDSARP VLLQVAESAY RFGLGSVAGA VGATAVYPID LVKTRMQNQR STGSFVGELM YKNSFDCFKK VLRYEGFFGL YRGLLPQLLG VAPEKAIKLT VNDFVRDKFM HKDGSVPLAA EILAGGCAGG SQVIFTNPLE IVKIRLQVAG EITTGPRVSA LSVVRDLGFF GIYKGAKACF LRDIPFSAIY FPCYAHVKAS FANEDGQVSP GSLLLAGAIA GMPAASLVTP ADVIKTRLQV AARAGQTTYS GVIDCFRKIL REEGPKALWK GAGARVFRSS PQFGVTLTTY

Product Details

ELLQRWFYID FGGVKPMGSE PVPKSRINLP APNPDHVGGY KLAVATFAGI ENKFGLYLPL
FKPSVSTSKA IGGGP

Cross-Reactivity: Human, Mouse

Characteristics: Antibody reactive against mammalian transfected lysate.

Target Details

Target: slc25a13

Alternative Name: SLC25A13 ([slc25a13 Products](#))

Background: Full Gene Name: solute carrier family 25, member 13 (citrin)
Synonyms: ARALAR2,CITRIN,CTLN2

Gene ID: 10165

NCBI Accession: [NM_014251](#)

Pathways: [Ribonucleoside Biosynthetic Process, Dicarboxylic Acid Transport](#)

Application Details

Application Notes: Optimal working dilution should be determined by the investigator.

Restrictions: For Research Use only

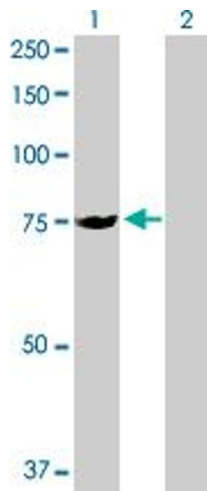
Handling

Buffer: In 1x PBS, pH 7.4

Handling Advice: Aliquot to avoid repeated freezing and thawing.

Storage: -20 °C

Storage Comment: Store at -20°C or lower. Aliquot to avoid repeated freezing and thawing.

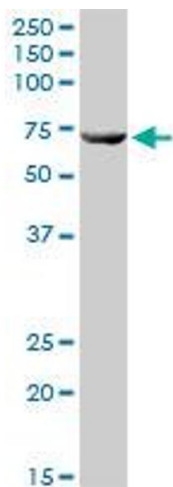


Western Blotting

Image 1. Western Blot analysis of SLC25A13 expression in transfected 293T cell line by SLC25A13 MaxPab polyclonal antibody.

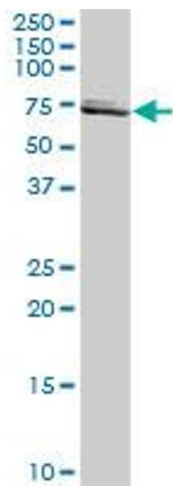
Lane 1: SLC25A13 transfected lysate(74.20 KDa).

Lane 2: Non-transfected lysate.



Western Blotting

Image 2. SLC25A13 MaxPab rabbit polyclonal antibody. Western Blot analysis of SLC25A13 expression in human liver.



Western Blotting

Image 3. SLC25A13 MaxPab rabbit polyclonal antibody. Western Blot analysis of SLC25A13 expression in mouse liver.

Please check the [product details page](#) for more images. Overall 4 images are available for ABIN523540.