



[Go to Product page](#)

Datasheet for ABIN523576

## anti-MPHOSPH9 antibody (AA 922-1031)

### 3 Images

#### Overview

Quantity:	100 µg
Target:	MPHOSPH9
Binding Specificity:	AA 922-1031
Reactivity:	Human
Host:	Mouse
Clonality:	Monoclonal
Conjugate:	This MPHOSPH9 antibody is un-conjugated
Application:	Western Blotting (WB), ELISA, Immunohistochemistry (Paraffin-embedded Sections) (IHC (p))

#### Product Details

Purpose:	Mouse monoclonal antibody raised against a partial recombinant MPHOSPH9.
Immunogen:	MPHOSPH9 (NP_073619, 922 a.a. ~ 1031 a.a) partial recombinant protein with GST tag. MW of the GST tag alone is 26 KDa.
Sequence:	SVRTAWEKNK SVSYEQCKPV SVTPQGNDFE YTAKIRTLAE TERFFDELTK EKDQIEAALS RMPSPGGRIT LQTRLNQEAL EDRLERINRE LGSVRMTLKK FHLVRLTSANL
Clone:	4E10
Isotype:	IgG2a
Cross-Reactivity:	Human
Characteristics:	Antibody Reactive Against Recombinant Protein.

## Target Details

Target:	MPHOSPH9
Alternative Name:	MPHOSPH9 ( <a href="#">MPHOSPH9 Products</a> )
Background:	Full Gene Name: M-phase phosphoprotein 9 Synonyms: DKFZp434J034,FLJ12954,MPP-9,MPP9
Gene ID:	10198
NCBI Accession:	<a href="#">NM_022782</a>

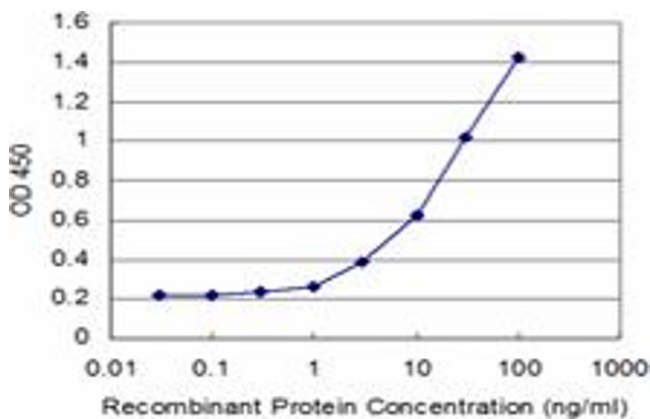
## Application Details

Application Notes:	Optimal working dilution should be determined by the investigator.
Restrictions:	For Research Use only

## Handling

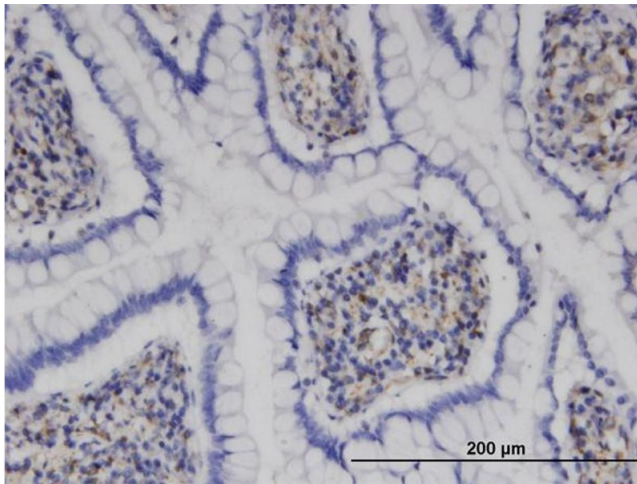
Buffer:	In 1x PBS, pH 7.4
Handling Advice:	Aliquot to avoid repeated freezing and thawing.
Storage:	-20 °C
Storage Comment:	Store at -20°C or lower. Aliquot to avoid repeated freezing and thawing.

## Images



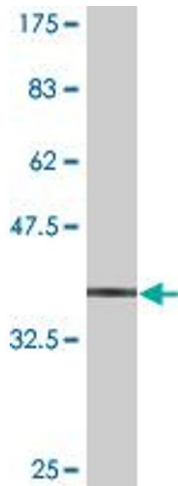
### ELISA

**Image 1.** Detection limit for recombinant GST tagged MPHOSPH9 is approximately 1ng/ml as a capture antibody.



### Immunostaining

**Image 2.** Immunoperoxidase of monoclonal antibody to MPHOSPH9 on formalin-fixed paraffin-embedded human small intestine. [antibody concentration 3 ug/ml]



### Western Blotting

**Image 3.** Western Blot detection against Immunogen (37.84 kDa).