



[Go to Product page](#)

Datasheet for ABIN523588

anti-MPZL2 antibody (AA 1-215)

2 Images

Overview

Quantity:	100 µL
Target:	MPZL2
Binding Specificity:	AA 1-215
Reactivity:	Human
Host:	Rabbit
Clonality:	Polyclonal
Conjugate:	This MPZL2 antibody is un-conjugated
Application:	Western Blotting (WB), Immunoprecipitation (IP)

Product Details

Purpose:	Rabbit polyclonal antibody raised against a full-length human MPZL2 protein.
Immunogen:	MPZL2 (NP_005788.1, 1 a.a. ~ 215 a.a) full-length human protein.
Sequence:	MYGKSSTRAV LLLGLIQLTA LWPIAAVEIY TSRVLEAVNG TDARKLCTFS SFAPVGDALT VTWNFRPLDG GPEQVFVYH IDPFQPMGR FKDRVSWDGN PERYDASILL WKLQFDDNGT YTCQVKNPPD VDGVIGEIRL SVHTVRFSE IHFLALAIGS ACALMIIIVI VVLFQHYRK KRWAERAHVK VEIKSKEEER LNQEKKVSVY LEDTD
Cross-Reactivity:	Human
Characteristics:	Antibody reactive against mammalian transfected lysate.

Target Details

Target:	MPZL2
---------	-------

Target Details

Alternative Name:	MPZL2 (MPZL2 Products)
Background:	Full Gene Name: myelin protein zero-like 2 Synonyms: EVA,EVA1
Gene ID:	10205
NCBI Accession:	NM_005797

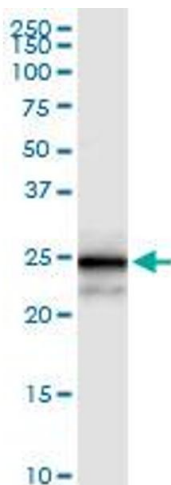
Application Details

Application Notes:	Optimal working dilution should be determined by the investigator.
Restrictions:	For Research Use only

Handling

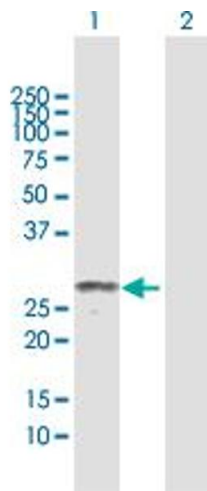
Format:	Liquid
Buffer:	No additive
Preservative:	Without preservative
Handling Advice:	Aliquot to avoid repeated freezing and thawing.
Storage:	-20 °C
Storage Comment:	Store at -20°C or lower. Aliquot to avoid repeated freezing and thawing.

Images



Immunoprecipitation

Image 1. Immunoprecipitation of MPZL2 transfected lysate using anti-MPZL2 MaxPab rabbit polyclonal antibody and Protein A Magnetic Bead , and immunoblotted with MPZL2 purified MaxPab mouse polyclonal antibody (B01P) .



Western Blotting

Image 2. Western Blot analysis of MPZL2 expression in transfected 293T cell line by MPZL2 MaxPab polyclonal antibody.

Lane 1: MPZL2 transfected lysate(24.5 KDa).

Lane 2: Non-transfected lysate.