



[Go to Product page](#)

Datasheet for ABIN523602
anti-Flotillin 1 antibody (AA 1-427)

2 Images

Overview

Quantity:	100 µg
Target:	Flotillin 1 (FLOT1)
Binding Specificity:	AA 1-427
Reactivity:	Human
Host:	Rabbit
Clonality:	Polyclonal
Conjugate:	This Flotillin 1 antibody is un-conjugated
Application:	Western Blotting (WB)

Product Details

Purpose:	Rabbit polyclonal antibody raised against a full-length human FLOT1 protein.
Immunogen:	FLOT1 (NP_005794.1, 1 a.a. ~ 427 a.a) full-length human protein.
Sequence:	MFFTCGPNEA MVSFGCRSP PVMVAGGRVF VLPCIQQIQR ISLNTLTLNV KSEKVYTRHG VPISVTGIAQ VKIQGQNKEM LAAACQMFLG KTEAEIAHIA LETLEGHQRA IMAHMTVEEI YKDRQKFSEQ VFKVASSDLV NMGISVVSYT LKDIHDDQDY LHSLGKARTA QVQKDARIGE AEAKRDAGIR EAKAKQEKVS AQYLSEIEMA KAQRDYELKK AAYDIEVNTR RAQADLAYQL QVAKTKQIE EQRVQVQVVE RAQQVAVQEQ EIARREKELE ARVRKPAEAE RYKLERLAEA EKSQIMQAE AEAASVRMRG EAEFAIGAR ARAEAEQMAK KAEAFQLYQE AAQLDMLLEK LPQVAEEISG PLTSANKITL VSSGSGTMGA AKVTGEVLDI LTRLPESVER LTGVSISQVN HKPLRТА
Cross-Reactivity:	Human
Characteristics:	Antibody reactive against mammalian transfected lysate.

Target Details

Target:	Flotillin 1 (FLOT1)
Alternative Name:	FLOT1 (FLOT1 Products)
Background:	Full Gene Name: flotillin 1 Synonyms:
Gene ID:	10211
NCBI Accession:	NM_005803

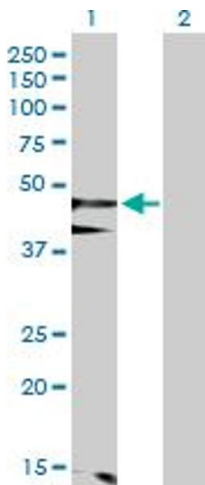
Application Details

Application Notes:	Optimal working dilution should be determined by the investigator.
Restrictions:	For Research Use only

Handling

Buffer:	In 1x PBS, pH 7.4
Handling Advice:	Aliquot to avoid repeated freezing and thawing.
Storage:	-20 °C
Storage Comment:	Store at -20°C or lower. Aliquot to avoid repeated freezing and thawing.

Images

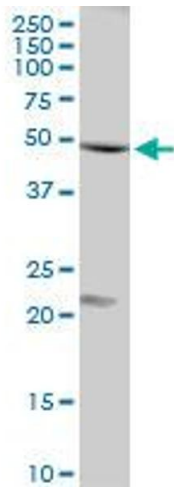


Western Blotting

Image 1. Western Blot analysis of FLOT1 expression in transfected 293T cell line by FLOT1 MaxPab polyclonal antibody.

Lane 1: FLOT1 transfected lysate(47.40 KDa).

Lane 2: Non-transfected lysate.



Western Blotting

Image 2. FLOT1 MaxPab rabbit polyclonal antibody.
Western Blot analysis of FLOT1 expression in human liver.