

Datasheet for ABIN523622
anti-GDF11 antibody (AA 310-407)[Go to Product page](#)

1 Image

Overview

Quantity:	100 µg
Target:	GDF11
Binding Specificity:	AA 310-407
Reactivity:	Human
Host:	Mouse
Clonality:	Monoclonal
Conjugate:	This GDF11 antibody is un-conjugated
Application:	ELISA, Immunohistochemistry (Paraffin-embedded Sections) (IHC (p))

Product Details

Purpose:	Mouse monoclonal antibody raised against a partial recombinant GDF11.
Immunogen:	GDF11 (NP_005802, 310 a.a. ~ 407 a.a) partial recombinant protein with GST tag. MW of the GST tag alone is 26 KDa.
Sequence:	ESRCCRYPLT VDFAFGWDW IIAPKRYKAN YCSGQCEYMF MQKYPHTHLV QQANPRGSAG PCCTPTKMSP INMLYFNDKQ QIIYGKIPGM VVDRCGCS
Clone:	3G6
Isotype:	IgG2b
Cross-Reactivity:	Human
Characteristics:	Antibody Reactive Against Recombinant Protein.

Target Details

Target:	GDF11
Alternative Name:	GDF11 (GDF11 Products)
Background:	Full Gene Name: growth differentiation factor 11 Synonyms: BMP-11,BMP11
Gene ID:	10220
NCBI Accession:	NM_005811

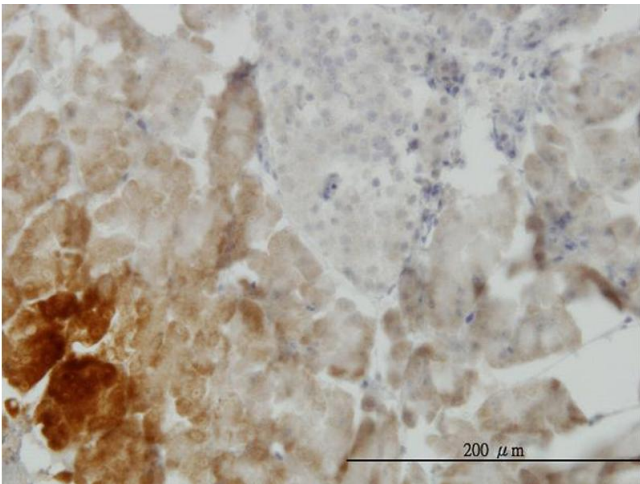
Application Details

Application Notes:	Optimal working dilution should be determined by the investigator.
Restrictions:	For Research Use only

Handling

Buffer:	In 1x PBS, pH 7.4
Handling Advice:	Aliquot to avoid repeated freezing and thawing.
Storage:	-20 °C
Storage Comment:	Store at -20°C or lower. Aliquot to avoid repeated freezing and thawing.

Images



Immunostaining

Image 1. Immunoperoxidase of monoclonal antibody to GDF11 on formalin-fixed paraffin-embedded human pancreas. [antibody concentration 3 ug/ml]