

Datasheet for ABIN523635
anti-PLIN3 antibody (AA 1-434)



[Go to Product page](#)

5 Images

Overview

Quantity:	100 µg
Target:	PLIN3
Binding Specificity:	AA 1-434
Reactivity:	Human
Host:	Mouse
Clonality:	Monoclonal
Conjugate:	This PLIN3 antibody is un-conjugated
Application:	Western Blotting (WB), ELISA, Immunoprecipitation (IP), Immunohistochemistry (Paraffin-embedded Sections) (IHC (p))

Product Details

Purpose:	Mouse monoclonal antibody raised against a full-length recombinant PLIN3.
Immunogen:	PLIN3 (AAH01590, 1 a.a. ~ 434 a.a) full-length recombinant protein with GST tag. MW of the GST tag alone is 26 KDa.
Sequence:	MSADGAEADG STQVTVEEPV QQPSVVDRA SEMPLISSTCD MVSAAYASTK ESYPHVKTVC DAAEKGVRTL TAAAVSGAQP ILSKLEPQIA SASEYHRGL DKLEENLPIL QQPTEKVLAD TKELVSSKVS GAQEMVSSAK DTVATQLSEA VDATRGAVQS GVDKTKSVVT GGVQSVMGSR LGQMVLSGVD TVLGKSEEWA DNHLPLTDAE LARIATSLDG FDVASVQQQR QEQSYFVRLG SLSERLRQHA YEHS LGKLR A TKQRAQEALL QLSQALSLME TVKQGV DQKL VEGQEKLHQM WLSWNQKQLQ GPEKEPPKPE QVESRALT MF RDIAQQLQAT C TSLGSSIQG LPTNVKDQVQ QARRQVEDLQ ATFSSIH SFQ DLSSSILAQS RERVASAREA LDHMVEYVAQ NTPVTWL VGP FAPGITEKAP EEKK

Product Details

Clone:	2F7
Isotype:	IgG1
Cross-Reactivity:	Human
Characteristics:	Antibody Reactive Against Recombinant Protein.

Target Details

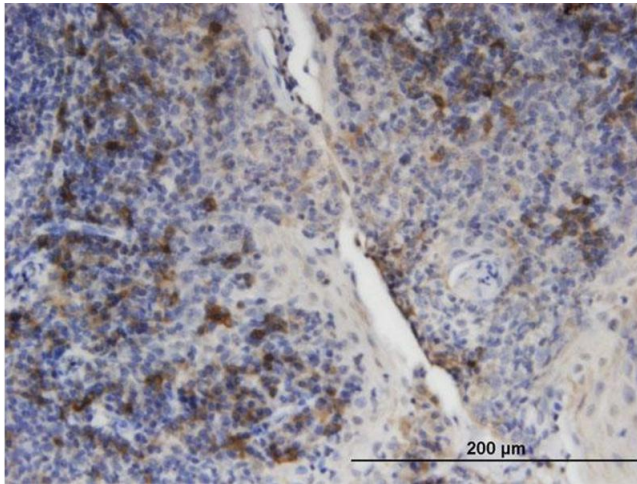
Target:	PLIN3
Alternative Name:	PLIN3 (PLIN3 Products)
Background:	Full Gene Name: mannose-6-phosphate receptor binding protein 1 Synonyms: MGC11117,MGC2012,PP17,TIP47,M6PRBP1
Gene ID:	10226

Application Details

Application Notes:	Optimal working dilution should be determined by the investigator.
Restrictions:	For Research Use only

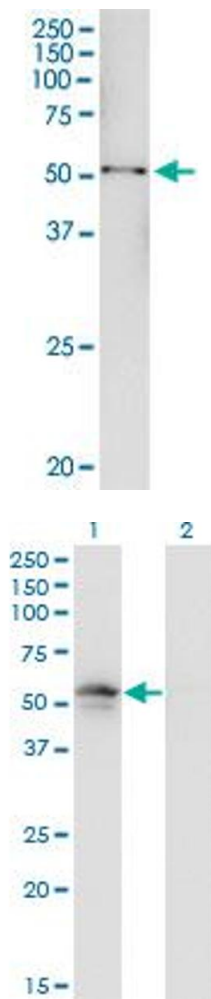
Handling

Buffer:	In 1x PBS, pH 7.4
Handling Advice:	Aliquot to avoid repeated freezing and thawing.
Storage:	-20 °C
Storage Comment:	Store at -20°C or lower. Aliquot to avoid repeated freezing and thawing.



Immunostaining

Image 1. Immunoperoxidase of monoclonal antibody to PLIN3 on formalin-fixed paraffin-embedded human tonsil. [antibody concentration 3 ug/ml]



Immunoprecipitation

Image 2. Immunoprecipitation of PLIN3 transfected lysate using anti-PLIN3 monoclonal antibody and Protein A Magnetic Bead, and immunoblotted with PLIN3 monoclonal antibody.

Western Blotting

Image 3. Western Blot analysis of PLIN3 expression in transfected 293T cell line by PLIN3 monoclonal antibody (M01), clone 2F7.

Lane 1: PLIN3 transfected lysate (Predicted MW: 47 KDa).

Lane 2: Non-transfected lysate.

Please check the [product details page](#) for more images. Overall 5 images are available for ABIN523635.