



[Go to Product page](#)

Datasheet for ABIN523641
anti-LRRC23 antibody (AA 1-343)

2 Images

Overview

Quantity:	50 µg
Target:	LRRC23
Binding Specificity:	AA 1-343
Reactivity:	Human
Host:	Mouse
Clonality:	Polyclonal
Conjugate:	This LRRC23 antibody is un-conjugated
Application:	Western Blotting (WB), Immunofluorescence (IF)

Product Details

Purpose:	Mouse polyclonal antibody raised against a full-length human LRRC23 protein.
Immunogen:	LRRC23 (AAH29858, 1 a.a. ~ 343 a.a) full-length human protein.
Sequence:	MSDEDDLEDS EPDQDDSEKE EDEKETEEGE DYRKEGEEFP EEWLPTPLTE DMMKEGLSLL CKTGNGLAHA YVKLEVKERD LTDIYLLRSY IHLRYVDISE NHLTDLSPLN YLTHLLWLKA DGNLLRSAQM NELPYLQIAS FAYNQITDTE GISHPRLETL NLKGNLSIHMV TGLDPEKLIS LHTVELRGNQ LESTLGINLP KLKNLYLAQN MLKKVEGLED LSNLTTLHLR DNQIDTLSGF SREMKSLQYL NLRGNMVANL GELAKLRDLP KLRALVLLDN PCTDETSYRQ EALVQMPYLE RLDKEFYEEE ERAEADVIRQ RLKEEKEQEP EPQRDLEPEQ SLI
Cross-Reactivity:	Human
Characteristics:	Antibody reactive against mammalian transfected lysate.

Target Details

Target:	LRRC23
Alternative Name:	LRRC23 (LRRC23 Products)
Background:	Full Gene Name: leucine rich repeat containing 23 Synonyms: LRPB7
Gene ID:	10233

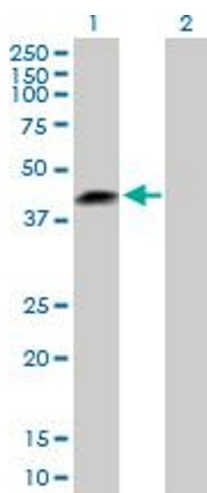
Application Details

Application Notes:	Optimal working dilution should be determined by the investigator.
Restrictions:	For Research Use only

Handling

Buffer:	In 1x PBS, pH 7.4
Handling Advice:	Aliquot to avoid repeated freezing and thawing.
Storage:	-20 °C
Storage Comment:	Store at -20°C or lower. Aliquot to avoid repeated freezing and thawing.

Images

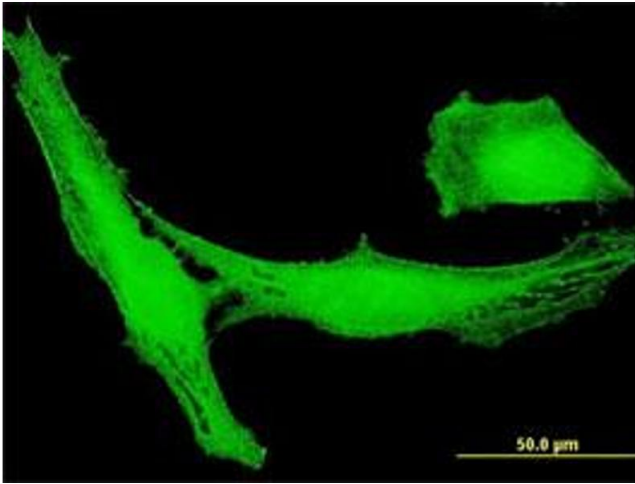


Western Blotting

Image 1. Western Blot analysis of LRRC23 expression in transfected 293T cell line by LRRC23 MaxPab polyclonal antibody.

Lane 1: LRRC23 transfected lysate(37.84 KDa).

Lane 2: Non-transfected lysate.



Immunofluorescence

Image 2. Immunofluorescence of purified MaxPab antibody to LRRC23 on HeLa cell. (antibody concentration 10 μ g/mL)