



[Go to Product page](#)

Datasheet for ABIN523645
anti-DCAF7 antibody (AA 1-342)

1 Image

Overview

| | |
|----------------------|--------------------------------------|
| Quantity: | 50 µL |
| Target: | DCAF7 |
| Binding Specificity: | AA 1-342 |
| Reactivity: | Human |
| Host: | Mouse |
| Clonality: | Polyclonal |
| Conjugate: | This DCAF7 antibody is un-conjugated |
| Application: | Western Blotting (WB) |

Product Details

| | |
|-------------------|--|
| Purpose: | Mouse polyclonal antibody raised against a full-length human WDR68 protein. |
| Immunogen: | WDR68 (NP_005819, 1 a.a. ~ 342 a.a) full-length human protein. |
| Sequence: | MSLHGKRKEI YKYEAPWTVY AMNWSVRPDK RFRLALGSFV EEYNNKVQLV GLDEESSEFI CRNTFDHPYP TTKLMWIPDT KGVYPDLLAT SGDYL RVWRV GETETRLECL LNNKN SDFC APLTSFDWNE VDPYLLGTSS IDTTCTIWGL ETGQVLGRVN LVSGHVKTQL IAHDKEYYDI AFSRAGGGRD MFASVGADGS VRMFDLRHLE HSTIIYEDPQ HHPLLRLCWN KQDPNYLATM AMDGMEVVIL DVRVPCTPVA RLNNHRACVN GIAWAPHSSC HICTAADDHQ ALIWDIQQMP RAIEDPILAY TAEGEINNVQ WASTQPDWIA ICYNNCLEIL RV |
| Cross-Reactivity: | Human |
| Characteristics: | Antibody reactive against mammalian transfected lysate. |

Target Details

| | |
|-------------------|---|
| Target: | DCAF7 |
| Alternative Name: | WDR68 (DCAF7 Products) |
| Background: | Full Gene Name: WD repeat domain 68 Synonyms: AN11,HAN11 |
| Gene ID: | 10238 |
| NCBI Accession: | NM_005828 |
| Pathways: | SARS-CoV-2 Protein Interactome |

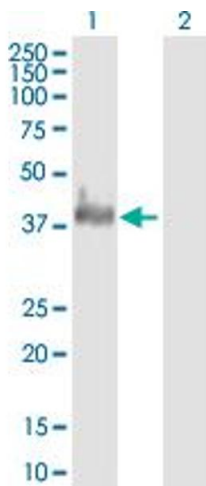
Application Details

| | |
|--------------------|--|
| Application Notes: | Optimal working dilution should be determined by the investigator. |
| Restrictions: | For Research Use only |

Handling

| | |
|------------------|--|
| Format: | Liquid |
| Buffer: | No additive |
| Preservative: | Without preservative |
| Handling Advice: | Aliquot to avoid repeated freezing and thawing. |
| Storage: | -20 °C |
| Storage Comment: | Store at -20°C or lower. Aliquot to avoid repeated freezing and thawing. |

Images



Western Blotting

Image 1. Western Blot analysis of WDR68 expression in transfected 293T cell line by WDR68 MaxPab polyclonal antibody.

Lane 1: WDR68 transfected lysate(37.62 KDa).

Lane 2: Non-transfected lysate.