



[Go to Product page](#)

Datasheet for ABIN523649

anti-MRPS31 antibody (AA 1-395)

1 Image

Overview

Quantity:	50 µg
Target:	MRPS31
Binding Specificity:	AA 1-395
Reactivity:	Human
Host:	Mouse
Clonality:	Polyclonal
Conjugate:	This MRPS31 antibody is un-conjugated
Application:	Western Blotting (WB)

Product Details

Purpose:	Mouse polyclonal antibody raised against a full-length human MRPS31 protein.
Immunogen:	MRPS31 (AAH22045.1, 1 a.a. ~ 395 a.a) full-length human protein.
Sequence:	MFPRVSTFLP LRPLSRHPLS SGSPETSAAA IMLLTVRHGT VRYRSSALLA RTKNNIQRYF GTNSVICSKK DKQSVRTEEI SKETSESQDS EKENTKKDLL GIIKGMKVEL STVNVRTTKP PKRRPLKSLE AALGRLRRAT EYAPKKRIEP LSPELVAAAS AVADSLPFDK QTTKSELLSQ LQQHEEESRA QRDAKRPKIS FSNIISDMKV ARSATARVRS RPELRIQFDE GYDNYPGQEK TDDLKRRKNI FTGKRLNIFD MMAVTKEAPE TDTSPSLWDV EFAKQLATVN EQPLQNGFEE LIQWTKEGKL WEFPINNEAG FDDDGESEFHE HIFLEKHLES FPKQGPIRHF MELVTCGLSK NPYLSVKQKV EHIEWFRNYF NEKKDILKES NIQFN
Cross-Reactivity:	Human
Characteristics:	Antibody reactive against mammalian transfected lysate.

Target Details

Target:	MRPS31
Alternative Name:	MRPS31 (MRPS31 Products)
Background:	Full Gene Name: mitochondrial ribosomal protein S31 Synonyms: IMOGN38,MRP-S31,S31mt
Gene ID:	10240

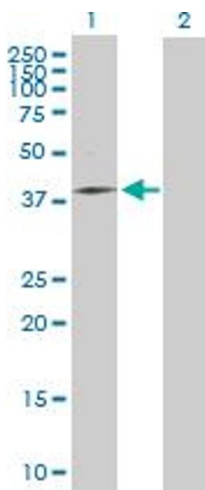
Application Details

Application Notes:	Optimal working dilution should be determined by the investigator.
Restrictions:	For Research Use only

Handling

Buffer:	In 1x PBS, pH 7.4
Handling Advice:	Aliquot to avoid repeated freezing and thawing.
Storage:	-20 °C
Storage Comment:	Store at -20°C or lower. Aliquot to avoid repeated freezing and thawing.

Images



Western Blotting

Image 1. Western Blot analysis of MRPS31 expression in transfected 293T cell line by MRPS31 MaxPab polyclonal antibody.

Lane 1: MRPS31 transfected lysate(43.45 KDa).

Lane 2: Non-transfected lysate.