

Datasheet for ABIN523667
anti-STAM2 antibody (AA 1-525)



[Go to Product page](#)

1 Image

Overview

Quantity:	100 µg
Target:	STAM2
Binding Specificity:	AA 1-525
Reactivity:	Human
Host:	Rabbit
Clonality:	Polyclonal
Conjugate:	This STAM2 antibody is un-conjugated
Application:	Western Blotting (WB)

Product Details

Purpose:	Rabbit polyclonal antibody raised against a full-length human STAM2 protein.
Immunogen:	STAM2 (AAH28740.1, 1 a.a. ~ 525 a.a) full-length human protein.
Sequence:	MPLFTANPFE QDVEKATNEY NTTEDWSLIM DICDKVGSTP NGAKDCLKAI MKRVNHKVP VALQALTLG ACVANCGKIF HLEVCSRFA TEVRAVIKKNK AHPKVCEKSL SLMVEWSEEF QKDPQFSLIS ATIKSMKEEG ITFPPAGSQT VSAAAKNGTS SNKNKEDEDI AKAIELSLQE QKQHTETKS LYPSSIEQLN NKVARKVRAL YDFEAVEDNE LTFKHGEIII VLDDSDANWW KGENHRGIGL FPSNFVTTNL NIETEEAAVD KLNVIDDDVE EIKKSEPEPV YIDEDKMDRA LQVLQSIDPT DSKPDSQDLL DLEDICQMG PMIDEKLEEI DRKHSELSEL NVKVLEALEL YNKLVNEAPV YSVYSKLHPP AHYPPASSGV PMQTYPVQSH GGNVMGQSIH QVTVAQSYSL GPDQIGPLRS LPPNVNSSVT AQAQTSYLS TGQDTSNPT YMNQNSNLQS ATGTTAYTQQ MGMSVDMSSY QNTTSLNPQL AGFPVTPAH PVAQHTNYH QQPLL

Product Details

Cross-Reactivity:	Human
Characteristics:	Antibody reactive against mammalian transfected lysate.

Target Details

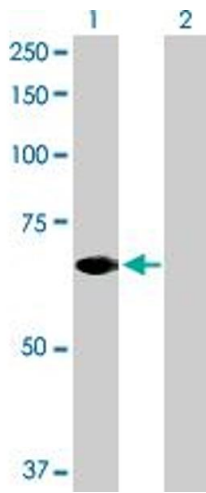
Target:	STAM2
Alternative Name:	STAM2 (STAM2 Products)
Background:	Full Gene Name: signal transducing adaptor molecule (SH3 domain and ITAM motif) 2 Synonyms: DKFZp564C047,Hbp,STAM2A,STAM2B
Gene ID:	10254
Pathways:	EGFR Signaling Pathway , EGFR Downregulation

Application Details

Application Notes:	Optimal working dilution should be determined by the investigator.
Restrictions:	For Research Use only

Handling

Buffer:	In 1x PBS, pH 7.4
Handling Advice:	Aliquot to avoid repeated freezing and thawing.
Storage:	-20 °C
Storage Comment:	Store at -20°C or lower. Aliquot to avoid repeated freezing and thawing.



Western Blotting

Image 1. Western Blot analysis of STAM2 expression in transfected 293T cell line by STAM2 MaxPab polyclonal antibody.

Lane 1: STAM2 transfected lysate(58.20 KDa).

Lane 2: Non-transfected lysate.