



[Go to Product page](#)

Datasheet for ABIN523696  
**anti-SMNDC1 antibody (AA 1-238)**

8 Images

Overview

Quantity:	50 µg
Target:	SMNDC1
Binding Specificity:	AA 1-238
Reactivity:	Human
Host:	Mouse
Clonality:	Polyclonal
Conjugate:	This SMNDC1 antibody is un-conjugated
Application:	Western Blotting (WB), Immunofluorescence (IF)

Product Details

Purpose:	Mouse polyclonal antibody raised against a full-length human SMNDC1 protein.
Immunogen:	SMNDC1 (NP_005862.1, 1 a.a. ~ 238 a.a) full-length human protein.
Sequence:	MSEDLAKQLA SYKAQLQQVE AALSGNGENE DLLKLLKDLQ EVIELTKDLL STQPSETLAS SDSFASTQPT HSWKVGDKCM AVWSEDGQCY EAEIEEIDEE NGTAAITFAG YGNAEVTPLL NLKPVEEGRK AKEDSGNKPM SKKEMIAQQR EYKKKKALKK AQRILEQE REDQKVKWQQ FNNRAYSKNK KGQVKRSIFA SPESVTGKVG VGTCGIADKP MTQYQDTSKY NVRHLMPQ
Cross-Reactivity:	Human, Mouse, Rat
Characteristics:	Antibody reactive against mammalian transfected lysate.

Target Details

Target:	SMNDC1
---------	--------

## Target Details

Alternative Name:	SMNDC1 ( <a href="#">SMNDC1 Products</a> )
Background:	Full Gene Name: survival motor neuron domain containing 1 Synonyms: SMNR,SPF30
Gene ID:	10285
NCBI Accession:	<a href="#">NM_005871</a>

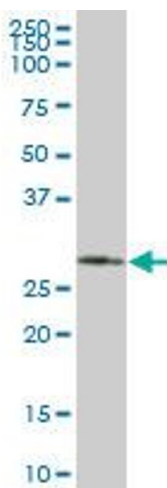
## Application Details

Application Notes:	Optimal working dilution should be determined by the investigator.
Restrictions:	For Research Use only

## Handling

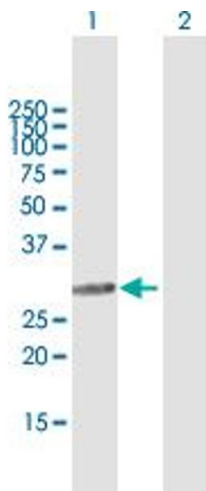
Buffer:	In 1x PBS, pH 7.4
Handling Advice:	Aliquot to avoid repeated freezing and thawing.
Storage:	-20 °C
Storage Comment:	Store at -20°C or lower. Aliquot to avoid repeated freezing and thawing.

## Images



### Western Blotting

**Image 1.** SMNDC1 MaxPab polyclonal antibody. Western Blot analysis of SMNDC1 expression in human placenta.

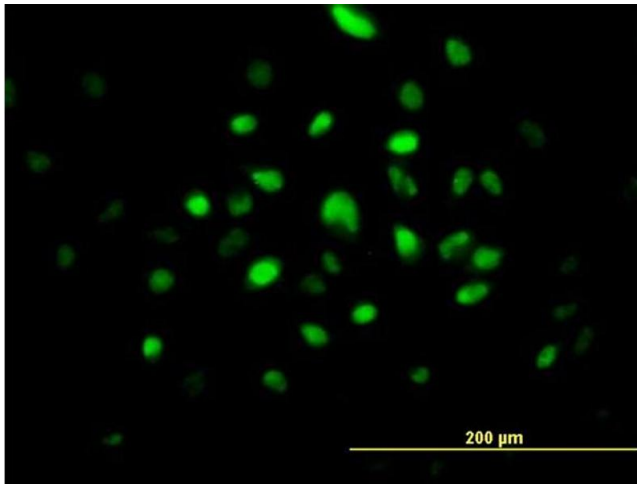


### Western Blotting

**Image 2.** Western Blot analysis of SMNDC1 expression in transfected 293T cell line by SMNDC1 MaxPab polyclonal antibody.

Lane 1: SMNDC1 transfected lysate(26.18 KDa).

Lane 2: Non-transfected lysate.



### Immunofluorescence

**Image 3.** Immunofluorescence of purified MaxPab antibody to SMNDC1 on HeLa cell. [antibody concentration 10 ug/ml]

Please check the [product details page](#) for more images. Overall 8 images are available for ABIN523696.