

Datasheet for ABIN523708
anti-DLEU1 antibody (AA 1-78)



[Go to Product page](#)

2 Images

Overview

Quantity:	100 µg
Target:	DLEU1
Binding Specificity:	AA 1-78
Reactivity:	Human
Host:	Mouse
Clonality:	Monoclonal
Conjugate:	This DLEU1 antibody is un-conjugated
Application:	ELISA, Western Blotting (WB)

Product Details

Purpose:	Mouse monoclonal antibody raised against a full-length recombinant DLEU1.
Immunogen:	DLEU1 (AAH20692, 1 a.a. ~ 78 a.a) full-length recombinant protein with GST tag. MW of the GST tag alone is 26 KDa.
Sequence:	MRPCWIHVH LKPPCRLVEL LPFSSALQGL SHLSLGTTLP VILPERNEEQ NLQELSHNAD KYQMGDCCKE EIDDSIFY
Clone:	2C2
Isotype:	IgG1
Cross-Reactivity:	Human
Characteristics:	Antibody Reactive Against Recombinant Protein.

Target Details

Target:	DLEU1
Alternative Name:	DLEU1 (DLEU1 Products)
Background:	Full Gene Name: deleted in lymphocytic leukemia 1 (non-protein coding) Synonyms: BCMS,DLB1,DLEU2,LEU1,LEU2,MGC22430,NCRNA00021,XTP6
Gene ID:	10301

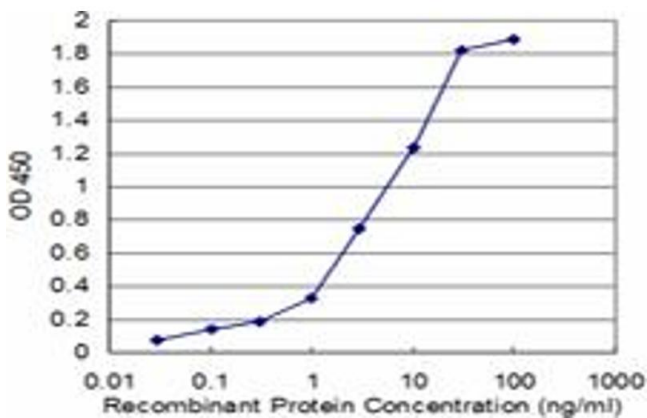
Application Details

Application Notes:	Optimal working dilution should be determined by the investigator.
Restrictions:	For Research Use only

Handling

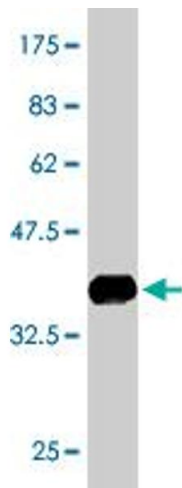
Buffer:	In 1x PBS, pH 7.4
Handling Advice:	Aliquot to avoid repeated freezing and thawing.
Storage:	-20 °C
Storage Comment:	Store at -20°C or lower. Aliquot to avoid repeated freezing and thawing.

Images



ELISA

Image 1. Detection limit for recombinant GST tagged DLEU1 is approximately 0.1ng/ml as a capture antibody.



Western Blotting

Image 2. Western Blot detection against Immunogen (34.32 kDa).