

Datasheet for ABIN523709
anti-SNAPC5 antibody (AA 1-68)[Go to Product page](#)

4 Images

Overview

Quantity:	100 µg
Target:	SNAPC5
Binding Specificity:	AA 1-68
Reactivity:	Human
Host:	Mouse
Clonality:	Monoclonal
Conjugate:	This SNAPC5 antibody is un-conjugated
Application:	ELISA, Western Blotting (WB)

Product Details

Purpose:	Mouse monoclonal antibody raised against a full length recombinant SNAPC5.
Immunogen:	SNAPC5 (AAH14315, 1 a.a. ~ 68 a.a) full-length recombinant protein with GST tag. MW of the GST tag alone is 26 KDa.
Sequence:	MLSRLQELRK EEETLLRLKA ALHDQLNRLK MLVHVDNEAS INQTTLELST KSHVTEEEEE EEEEESDS
Clone:	5C3
Isotype:	IgG2a
Cross-Reactivity:	Human
Characteristics:	Antibody Reactive Against Recombinant Protein.

Target Details

Target:	SNAPC5
Alternative Name:	SNAPC5 (SNAPC5 Products)
Background:	Full Gene Name: small nuclear RNA activating complex, polypeptide 5, 19 kDa Synonyms: SNAP19
Gene ID:	10302

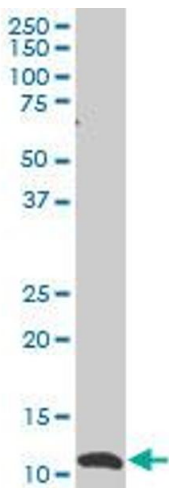
Application Details

Application Notes:	Optimal working dilution should be determined by the investigator.
Restrictions:	For Research Use only

Handling

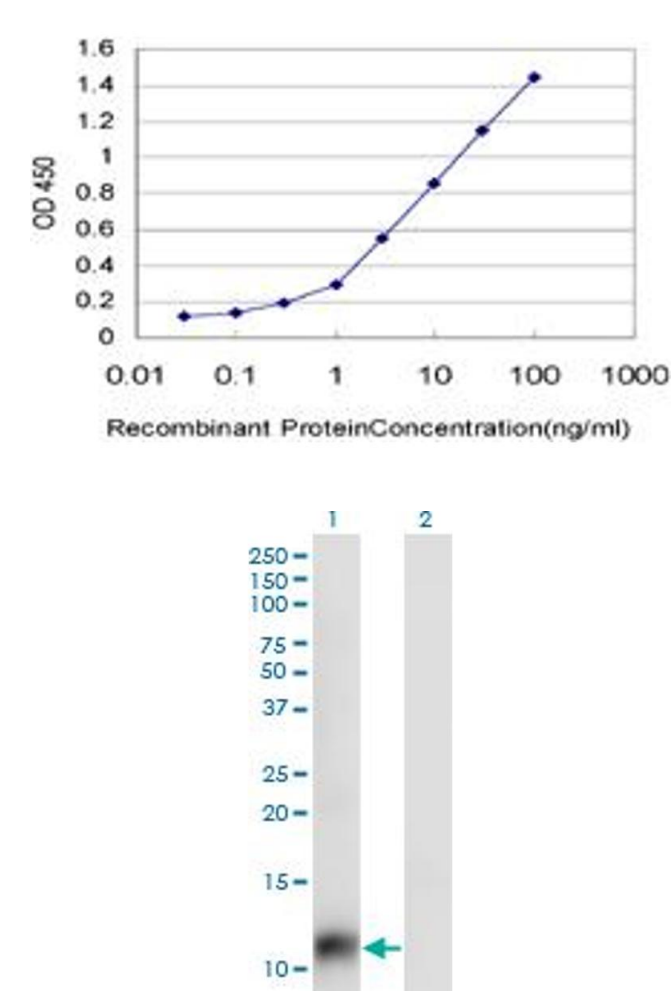
Buffer:	In 1x PBS, pH 7.4
Handling Advice:	Aliquot to avoid repeated freezing and thawing.
Storage:	-20 °C
Storage Comment:	Store at -20°C or lower. Aliquot to avoid repeated freezing and thawing.

Images



Western Blotting

Image 1. SNAPC5 monoclonal antibody (M02), clone 5C3
Western Blot analysis of SNAPC5 expression in HL-60 .



ELISA

Image 2. Detection limit for recombinant GST tagged SNAPC5 is approximately 0.1ng/ml as a capture antibody.

Western Blotting

Image 3. Western Blot analysis of SNAPC5 expression in transfected 293T cell line by SNAPC5 monoclonal antibody (M02), clone 5C3.

Lane 1: SNAPC5 transfected lysate(8 kDa).

Lane 2: Non-transfected lysate.

Please check the [product details page](#) for more images. Overall 4 images are available for ABIN523709.