

Datasheet for ABIN523731
anti-TLR6 antibody (AA 201-300)



[Go to Product page](#)

1 Image

Overview

Quantity:	100 µg
Target:	TLR6
Binding Specificity:	AA 201-300
Reactivity:	Human
Host:	Mouse
Clonality:	Monoclonal
Conjugate:	This TLR6 antibody is un-conjugated
Application:	ELISA

Product Details

Purpose:	Mouse monoclonal antibody raised against a partial recombinant TLR6.
Immunogen:	TLR6 (NP_006059, 201 a.a. ~ 300 a.a) partial recombinant protein with GST tag. MW of the GST tag alone is 26 KDa.
Sequence:	LVFHPTSLFA IQVNISVNTL GCLQLTNIKL NDDNCQVFIK FLSELTRGST LLNFTLNHIE TTWKCLVRVF QFLWPKPVEY LNIYNLTIIE SIREEDFTYS
Clone:	2B3
Isotype:	IgG2b
Cross-Reactivity:	Human
Characteristics:	Antibody Reactive Against Recombinant Protein.

Target Details

Target:	TLR6
Alternative Name:	TLR6 (TLR6 Products)
Background:	Full Gene Name: toll-like receptor 6 Synonyms: CD286
Gene ID:	10333
NCBI Accession:	NM_006068
Pathways:	TLR Signaling, Activation of Innate immune Response, Cellular Response to Molecule of Bacterial Origin, Toll-Like Receptors Cascades

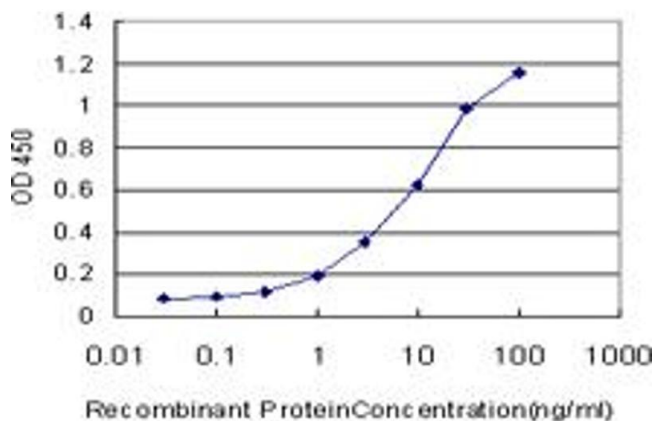
Application Details

Application Notes:	Optimal working dilution should be determined by the investigator.
Restrictions:	For Research Use only

Handling

Buffer:	In 1x PBS, pH 7.4
Handling Advice:	Aliquot to avoid repeated freezing and thawing.
Storage:	-20 °C
Storage Comment:	Store at -20°C or lower. Aliquot to avoid repeated freezing and thawing.

Images



ELISA

Image 1. Detection limit for recombinant GST tagged TLR6 is approximately 0.3ng/ml as a capture antibody.