



[Go to Product page](#)

Datasheet for ABIN523739  
**anti-TLR6 antibody (AA 301-430)**

1 Image

Overview

Quantity:	100 µg
Target:	TLR6
Binding Specificity:	AA 301-430
Reactivity:	Human
Host:	Mouse
Clonality:	Monoclonal
Conjugate:	This TLR6 antibody is un-conjugated
Application:	ELISA

Product Details

Purpose:	Mouse monoclonal antibody raised against a full length recombinant TLR6.
Immunogen:	TLR6 (NP_006059, 301 a.a. ~ 430 a.a) full length recombinant protein with GST tag. MW of the GST tag alone is 26 KDa.
Sequence:	kttlkaltie hitnqvflfs qtalytvfse nmimmltisd tpfihmlcph apstfkflnf tqnvftdsif ekcstlvkle tllqknglk dlfkvglmtdk dmpslleldv swnslesgrh kenctwvesi
Clone:	2F12
Isotype:	IgG2a
Cross-Reactivity:	Human
Characteristics:	Antibody Reactive Against Recombinant Protein.

## Target Details

Target:	TLR6
Alternative Name:	TLR6 ( <a href="#">TLR6 Products</a> )
Background:	Full Gene Name: toll-like receptor 6 Synonyms: CD286
Gene ID:	10333
NCBI Accession:	<a href="#">NM_006068</a>
Pathways:	<a href="#">TLR Signaling</a> , <a href="#">Activation of Innate immune Response</a> , <a href="#">Cellular Response to Molecule of Bacterial Origin</a> , <a href="#">Toll-Like Receptors Cascades</a>

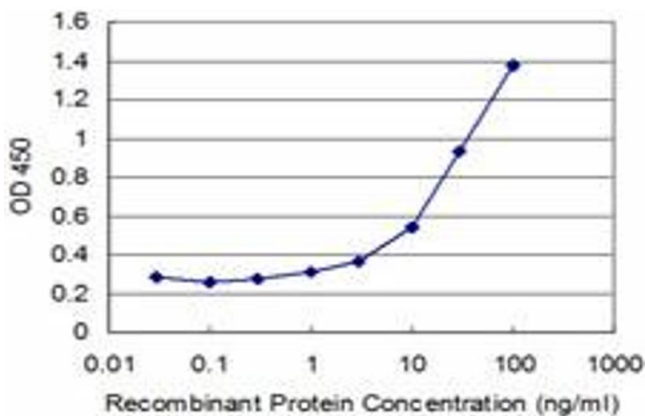
## Application Details

Application Notes:	Optimal working dilution should be determined by the investigator.
Restrictions:	For Research Use only

## Handling

Buffer:	In 1x PBS, pH 7.4
Handling Advice:	Aliquot to avoid repeated freezing and thawing.
Storage:	-20 °C
Storage Comment:	Store at -20°C or lower. Aliquot to avoid repeated freezing and thawing.

## Images



### ELISA

**Image 1.** Detection limit for recombinant GST tagged TLR6 is approximately 1ng/ml as a capture antibody.