



[Go to Product page](#)

Datasheet for ABIN523746
anti-CCL26 antibody (AA 1-94)

1 Image

Overview

Quantity:	100 µg
Target:	CCL26
Binding Specificity:	AA 1-94
Reactivity:	Human
Host:	Rabbit
Clonality:	Polyclonal
Conjugate:	This CCL26 antibody is un-conjugated
Application:	Western Blotting (WB)

Product Details

Purpose:	Rabbit polyclonal antibody raised against a full-length human CCL26 protein.
Immunogen:	CCL26 (NP_006063.1, 1 a.a. ~ 94 a.a) full-length human protein.
Sequence:	MMGLSLASAV LLASLLSLHL GTATRGSDIS KTCCFQYSHK PLPWTWVRSY EFTSNCSQR AVIFTTKRGK KVCTHPRKKW VQKYISLLKT PKQL
Cross-Reactivity:	Human
Characteristics:	Antibody reactive against mammalian transfected lysate.

Target Details

Target:	CCL26
Alternative Name:	CCL26 (CCL26 Products)

Target Details

Background:	Full Gene Name: chemokine (C-C motif) ligand 26 Synonyms: IMAC,MGC126714,MIP-4a,MIP-4alpha,SCYA26,TSC-1
Gene ID:	10344
NCBI Accession:	NM_006072
Pathways:	Regulation of Actin Filament Polymerization

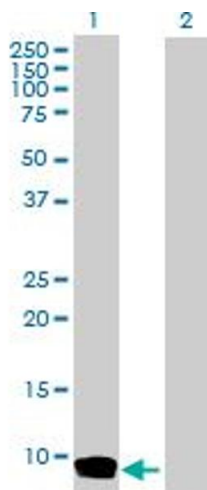
Application Details

Application Notes:	Optimal working dilution should be determined by the investigator.
Restrictions:	For Research Use only

Handling

Buffer:	In 1x PBS, pH 7.4
Handling Advice:	Aliquot to avoid repeated freezing and thawing.
Storage:	-20 °C
Storage Comment:	Store at -20°C or lower. Aliquot to avoid repeated freezing and thawing.

Images



Western Blotting

Image 1. Western Blot analysis of CCL26 expression in transfected 293T cell line by CCL26 MaxPab polyclonal antibody.

Lane 1: CCL26 transfected lysate(10.60 kDa).

Lane 2: Non-transfected lysate.