



[Go to Product page](#)

Datasheet for ABIN523760

anti-KLF2 antibody (AA 263-350)

2 Images

1 Publication

Overview

Quantity:	100 µg
Target:	KLF2
Binding Specificity:	AA 263-350
Reactivity:	Human
Host:	Mouse
Clonality:	Monoclonal
Conjugate:	This KLF2 antibody is un-conjugated
Application:	Western Blotting (WB), ELISA

Product Details

Purpose:	Mouse monoclonal antibody raised against a partial recombinant KLF2.
Immunogen:	KLF2 (NP_057354, 263 a.a. ~ 350 a.a) partial recombinant protein with GST tag. MW of the GST tag alone is 26 KDa.
Sequence:	SWPRKRTATH TCSYAGCGKT YTKSSHLKAH LRHTTGEKPY HCNWDGCGWK FARSDLTRH YRKHTGHRPF QCHLCDRAFS RSDHLALH
Clone:	1D12
Isotype:	IgG2a
Cross-Reactivity:	Human
Characteristics:	Antibody Reactive Against Recombinant Protein.

Target Details

Target:	KLF2
Alternative Name:	KLF2 (KLF2 Products)
Background:	Full Gene Name: Kruppel-like factor 2 (lung) Synonyms: LKLF
Gene ID:	10365
NCBI Accession:	NM_016270

Application Details

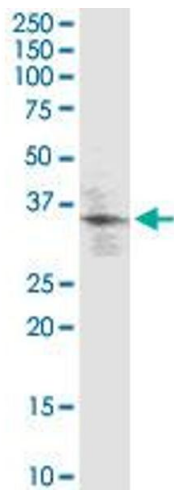
Application Notes:	Optimal working dilution should be determined by the investigator.
Restrictions:	For Research Use only

Handling

Buffer:	In 1x PBS, pH 7.4
Handling Advice:	Aliquot to avoid repeated freezing and thawing.
Storage:	-20 °C
Storage Comment:	Store at -20°C or lower. Aliquot to avoid repeated freezing and thawing.

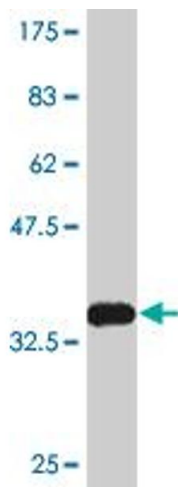
Publications

Product cited in:	Richardson, Jadowsky, Didigu, Doms, Riley: "Kruppel-like factor 2 modulates CCR5 expression and susceptibility to HIV-1 infection." in: Journal of immunology (Baltimore, Md. : 1950) , Vol. 189, Issue 8, pp. 3815-21, (2012) (PubMed).
-------------------	---



Western Blotting

Image 1. KLF2 monoclonal antibody (M09), clone 1D12.
Western Blot analysis of KLF2 expression in IMR-32.



Western Blotting

Image 2. Western Blot detection against Immunogen (35.42 kDa).