



Datasheet for ABIN523777
anti-SCML2 antibody (AA 251-350)



[Go to Product page](#)

3 Images

Overview

Quantity:	100 µg
Target:	SCML2
Binding Specificity:	AA 251-350
Reactivity:	Human
Host:	Mouse
Clonality:	Monoclonal
Conjugate:	This SCML2 antibody is un-conjugated
Application:	Western Blotting (WB), ELISA, Immunofluorescence (IF)

Product Details

Purpose:	Mouse monoclonal antibody raised against a partial recombinant SCML2.
Immunogen:	SCML2 (NP_006080, 251 a.a. ~ 350 a.a) partial recombinant protein with GST tag. MW of the GST tag alone is 26 KDa.
Sequence:	AKTESSPSEA SQHSMQSPQK TTLILPTQQV RRSSRIKPPG PTAVPKRSSS VKNITPRKKG PNSGKKEKPL PVICSTSAAS LKSLTRDRGM LYKDVASGPC
Clone:	1C8
Isotype:	IgG2a
Cross-Reactivity:	Human
Characteristics:	Antibody Reactive Against Recombinant Protein.

Target Details

Target:	SCML2
Alternative Name:	SCML2 (SCML2 Products)
Background:	Full Gene Name: sex comb on midleg-like 2 (Drosophila) Synonyms:
Gene ID:	10389
NCBI Accession:	NM_006089

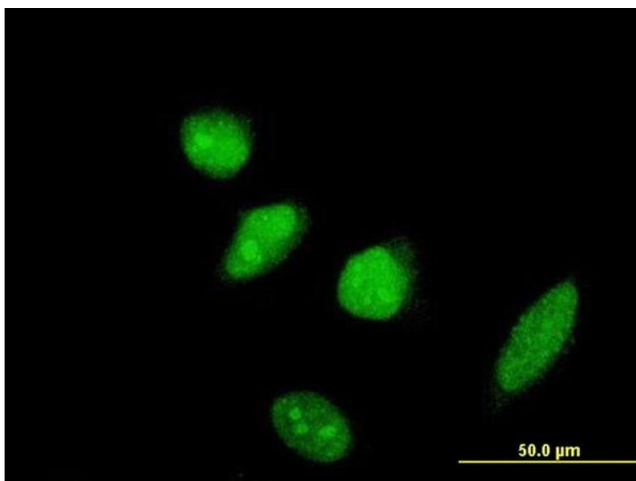
Application Details

Application Notes:	Optimal working dilution should be determined by the investigator.
Restrictions:	For Research Use only

Handling

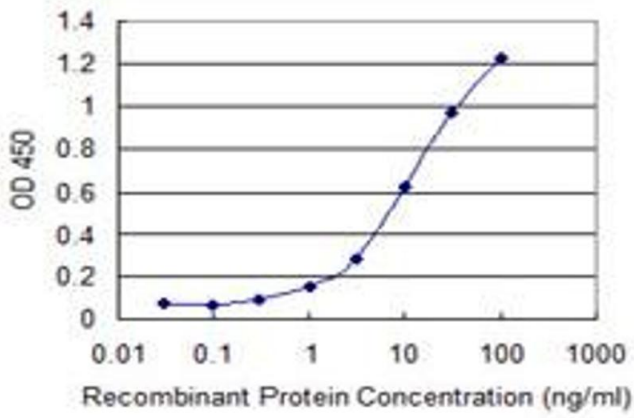
Buffer:	In 1x PBS, pH 7.4
Handling Advice:	Aliquot to avoid repeated freezing and thawing.
Storage:	-20 °C
Storage Comment:	Store at -20°C or lower. Aliquot to avoid repeated freezing and thawing.

Images



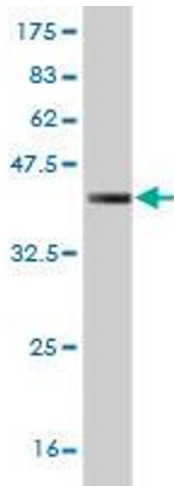
Immunofluorescence

Image 1. Immunofluorescence of monoclonal antibody to SCML2 on HeLa cell. [antibody concentration 10 ug/ml]



ELISA

Image 2. Detection limit for recombinant GST tagged SCML2 is 0.3 ng/ml as a capture antibody.



Western Blotting

Image 3. Western Blot detection against Immunogen (36.74 kDa).