

Datasheet for ABIN523799
anti-WFDC2 antibody (AA 31-124)[Go to Product page](#)

1 Image

Overview

Quantity:	100 µg
Target:	WFDC2
Binding Specificity:	AA 31-124
Reactivity:	Human
Host:	Mouse
Clonality:	Monoclonal
Conjugate:	This WFDC2 antibody is un-conjugated
Application:	ELISA

Product Details

Purpose:	Mouse monoclonal antibody raised against a full-length recombinant WFDC2.
Immunogen:	WFDC2 (AAH46106.1, 31 a.a. ~ 124 a.a) full-length recombinant protein with GST tag. MW of the GST tag alone is 26 KDa.
Sequence:	EKTGVCPQLQ ADQNCTQECV SDSECADNLK CCSAGCATFC SLPNDKEGSC PQVNINFPQL GLCRDQCQVD SQCPGQMKCC RNGCGKVSCV TPNF
Clone:	1A23
Isotype:	IgG1
Cross-Reactivity:	Human
Characteristics:	Antibody Reactive Against Recombinant Protein.

Target Details

Target:	WFDC2
Alternative Name:	WFDC2 (WFDC2 Products)
Background:	Full Gene Name: WAP four-disulfide core domain 2 Synonyms: HE4,MGC57529,WAP5,dJ461P17.6
Gene ID:	10406

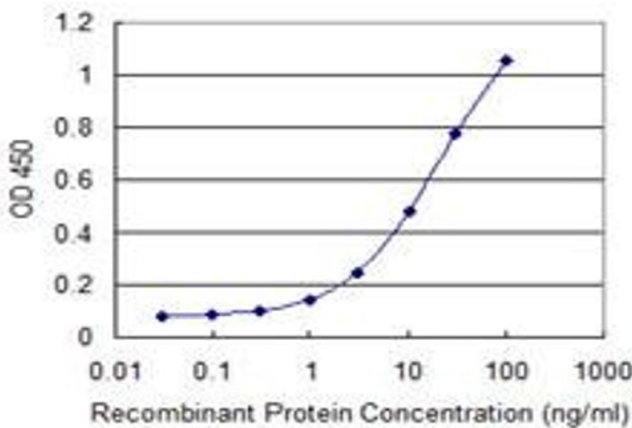
Application Details

Application Notes:	Optimal working dilution should be determined by the investigator.
Restrictions:	For Research Use only

Handling

Buffer:	In 1x PBS, pH 7.4
Handling Advice:	Aliquot to avoid repeated freezing and thawing.
Storage:	-20 °C
Storage Comment:	Store at -20°C or lower. Aliquot to avoid repeated freezing and thawing.

Images



ELISA

Image 1. Detection limit for recombinant GST tagged WFDC2 is 0.3 ng/ml as a capture antibody.