



[Go to Product page](#)

Datasheet for ABIN523833  
**anti-EMG1 antibody (AA 1-244)**

2 Images

Overview

Quantity:	50 µg
Target:	EMG1
Binding Specificity:	AA 1-244
Reactivity:	Human
Host:	Mouse
Clonality:	Polyclonal
Conjugate:	This EMG1 antibody is un-conjugated
Application:	Western Blotting (WB), Immunofluorescence (IF)

Product Details

Purpose:	Mouse polyclonal antibody raised against a full-length human EMG1 protein.
Immunogen:	EMG1 (AAH55314, 1 a.a. ~ 244 a.a) full-length human protein.
Sequence:	MAAPSDGFKP RERSGGEQAA DWDALPPKRP RLGAGNKIGG RRLIVVLEGA SLETVKVGKT YELLNCDKHK SILLKNGRDP GEARPDITHQ SLLMLMDSPL NRAGLLQVYI HTQKNVLIIEV NPQTRIPRTF DRFCGLMVQL LHKLSVRAAD GPQKLLKVIK NPVSDHFPVG CMKVGTSFSI PVVSDVRELV PSSDPVIVFVW GAFAHGKVSV EYTEKMVSIS NYPLSAALTC AKLTTAFEEV WGVI
Cross-Reactivity:	Human
Characteristics:	Antibody reactive against mammalian transfected lysate.

Target Details

Target:	EMG1
---------	------

## Target Details

Alternative Name:	EMG1 ( <a href="#">EMG1 Products</a> )
Background:	Full Gene Name: EMG1 nucleolar protein homolog ( <i>S. cerevisiae</i> ) Synonyms: C2F,FLJ60792,Grcc2f,NEP1
Gene ID:	10436

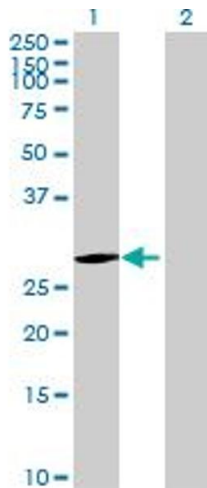
## Application Details

Application Notes:	Optimal working dilution should be determined by the investigator.
Restrictions:	For Research Use only

## Handling

Buffer:	In 1x PBS, pH 7.4
Handling Advice:	Aliquot to avoid repeated freezing and thawing.
Storage:	-20 °C
Storage Comment:	Store at -20°C or lower. Aliquot to avoid repeated freezing and thawing.

## Images

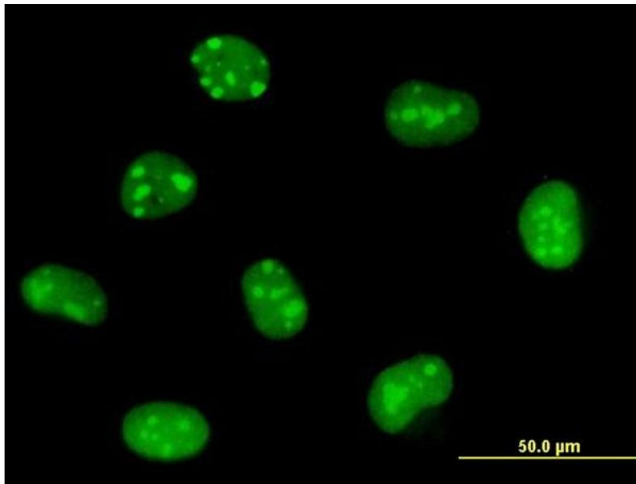


### Western Blotting

**Image 1.** Western Blot analysis of EMG1 expression in transfected 293T cell line by EMG1 MaxPab polyclonal antibody.

Lane 1: EMG1 transfected lysate(26.84 kDa).

Lane 2: Non-transfected lysate.



### Immunofluorescence

**Image 2.** Immunofluorescence of purified MaxPab antibody to EMG1 on HeLa cell. [antibody concentration 10 µg/ml]