



[Go to Product page](#)

Datasheet for ABIN523850
anti-TAB1 antibody (AA 1-504)

1 Image

Overview

Quantity:	100 µL
Target:	TAB1
Binding Specificity:	AA 1-504
Reactivity:	Human
Host:	Rabbit
Clonality:	Polyclonal
Conjugate:	This TAB1 antibody is un-conjugated
Application:	Immunoprecipitation (IP)

Product Details

Purpose:	Rabbit polyclonal antibody raised against a full-length human MAP3K7IP1 protein.
Immunogen:	MAP3K7IP1 (NP_006107.1, 1 a.a. ~ 504 a.a) full-length human protein.
Sequence:	MAAQRRLQ SEQQPSWTDD LPLCHLSGVG SASNRSYSAD GKGTESHPPE DSWLKFRSEN NCFLYGVFNG YDGNRVTNFV AQRLSAELLL GQLNAEHAEA DVRRVLLQAF DVVERSFLES IDDALAEKAS LQSQLPEGVP QHQLPPQYQK ILERLKTLE EISGGAMAVV AVLLNNKLYV ANVGTNRALL CKSTVDGLQV TQLNVDHTTE NEDELFRLSQ LGLDAGKIKQ VGIICGQEST RRIGDYKVKY GYTDIDLLSA AKSKPIIAEP EIHGAQPLDG VTGFLVLMSE GLYKALEAAH GPGQANQEIA AMIDTEFAKQ TSLDAVAQAV VDRVKRIHSD TFASGGERAR FCPRHEDMTL LVRNFGYPLG EMSQPTPSPA PAAGGRVYPV SVPYSSAQST SKTSVTLISLV MPSQGQMVNG AHSASTLDEA TPTLTNQSPT LTLQSTNTH T QSSSSSSDGG LFRSRPAHSL PPGEDGRVEP YVDFAEFYRL WSVDHGEQSV VTAP

Product Details

Cross-Reactivity:	Human
Characteristics:	Antibody reactive against mammalian transfected lysate.

Target Details

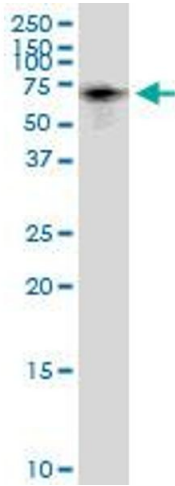
Target:	TAB1
Alternative Name:	MAP3K7IP1 (TAB1 Products)
Background:	Full Gene Name: mitogen-activated protein kinase kinase kinase 7 interacting protein 1 Synonyms: 3'-Tab1,MGC57664,TAB1
Gene ID:	10454
NCBI Accession:	NM_006116
Pathways:	TLR Signaling , Fc-epsilon Receptor Signaling Pathway , Activation of Innate immune Response , Toll-Like Receptors Cascades

Application Details

Application Notes:	Optimal working dilution should be determined by the investigator.
Restrictions:	For Research Use only

Handling

Format:	Liquid
Buffer:	No additive
Preservative:	Without preservative
Handling Advice:	Aliquot to avoid repeated freezing and thawing.
Storage:	-20 °C
Storage Comment:	Store at -20°C or lower. Aliquot to avoid repeated freezing and thawing.



Immunoprecipitation

Image 1. Immunoprecipitation of MAP3K7IP1 transfected lysate using anti-MAP3K7IP1 MaxPab rabbit polyclonal antibody and Protein A Magnetic Bead , and immunoblotted with MAP3K7IP1 purified MaxPab mouse polyclonal antibody (B01P) .