

Datasheet for ABIN523899
anti-CREB3 antibody (AA 1-371)



[Go to Product page](#)

3 Images

Overview

Quantity:	100 µg
Target:	CREB3
Binding Specificity:	AA 1-371
Reactivity:	Human
Host:	Rabbit
Clonality:	Polyclonal
Conjugate:	This CREB3 antibody is un-conjugated
Application:	Western Blotting (WB), Proximity Ligation Assay (PLA)

Product Details

Purpose:	Rabbit polyclonal antibody raised against a full-length human CREB3 protein.
Immunogen:	CREB3 (AAH09402.1, 1 a.a. ~ 371 a.a) full-length human protein.
Sequence:	MELELDAGDQ DLLAFLLEES GDLGTAPDEA VRAPLDWALP LSEVPSDWEV DDLLCSLLSP PASLNILSSS NPCLVHHHT YSLPRETVSM DLESESCRKE GTQMTPQHME ELAEQEIARL VLTDEEKSLLEKEGLILPET LPLTKTEEQI LKRVRRKIRN KRSAQESRRK KKVYVGGLES RVLKYTAQNM ELQNKVQLLE EQNLSLLDQL RKLQAMVIEI SNKTSSTC ILVLLVSFCL LLVPAIYSSD TRGSLPAEHG VLSRQLRALP SEDPYQLELP ALQSEVPKDS THQWLDGSDC VLQAPGNTSC LLHYMPQAPS AEPPELWFPF DLFSEPLCRG PILPLQANLT RKGGWLPTGS PSVILQDRYS G
Cross-Reactivity:	Human
Characteristics:	Antibody reactive against mammalian transfected lysate.

Target Details

Target:	CREB3
Alternative Name:	CREB3 (CREB3 Products)
Background:	Full Gene Name: cAMP responsive element binding protein 3 Synonyms: LUMAN,LZIP,MGC15333,MGC19782
Gene ID:	10488
Pathways:	Thyroid Hormone Synthesis , Myometrial Relaxation and Contraction , ER-Nucleus Signaling , Maintenance of Protein Location , Unfolded Protein Response

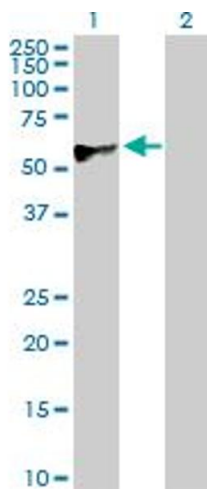
Application Details

Application Notes:	Optimal working dilution should be determined by the investigator.
Restrictions:	For Research Use only

Handling

Buffer:	In 1x PBS, pH 7.4
Handling Advice:	Aliquot to avoid repeated freezing and thawing.
Storage:	-20 °C
Storage Comment:	Store at -20°C or lower. Aliquot to avoid repeated freezing and thawing.

Images

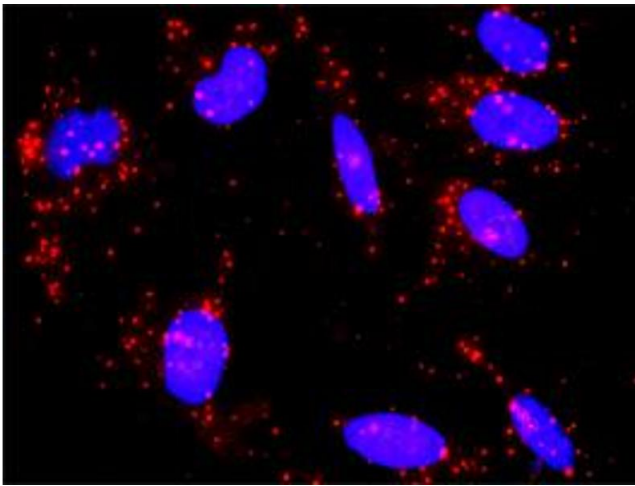


Western Blotting

Image 1. Western Blot analysis of CREB3 expression in transfected 293T cell line by CREB3 MaxPab polyclonal antibody.

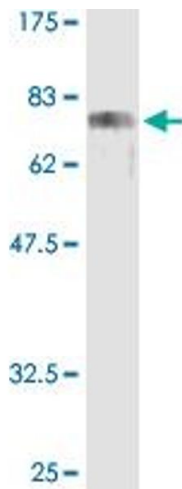
Lane 1: CREB3 transfected lysate(41.40 kDa).

Lane 2: Non-transfected lysate.



Proximity Ligation Assay

Image 2. Proximity Ligation Analysis of protein-protein interactions between CREB3 and CREB3L4. HeLa cells were stained with anti-CREB3 rabbit purified polyclonal 1:1200 and anti-CREB3L4 mouse monoclonal antibody 1:50. Each red dot represents the detection of protein-protein interaction complex, and nuclei were counterstained with DAPI (blue).



Western Blotting

Image 3. Western Blot analysis of CREB3 recombinant protein (H00010488-P01) by CREB3 purified MaxPab rabbit polyclonal antibody.