

Datasheet for ABIN523949
anti-BATF antibody (AA 1-125)[Go to Product page](#)

1 Image

Overview

Quantity:	50 µg
Target:	BATF
Binding Specificity:	AA 1-125
Reactivity:	Human
Host:	Mouse
Clonality:	Polyclonal
Conjugate:	This BATF antibody is un-conjugated
Application:	Western Blotting (WB)

Product Details

Purpose:	Mouse polyclonal antibody raised against a full-length human BATF protein.
Immunogen:	BATF (NP_006390.1, 1 a.a. ~ 125 a.a) full-length human protein.
Sequence:	MPHSSDSSDS SFSRSPPPGK QDSSDDVRRV QRREKNRIAA QKSRQRQTQK ADTLHLESED LEKQNAALRK EIKQLTEELK YFTSVLNSHE PLCSVLAAS PSPPEVVYSA HAFHQPHVSS PRFQP
Cross-Reactivity:	Human
Characteristics:	Antibody reactive against mammalian transfected lysate.

Target Details

Target:	BATF
Alternative Name:	BATF (BATF Products)

Target Details

Background:	Full Gene Name: basic leucine zipper transcription factor, ATF-like Synonyms: B-ATF,BATF1,SFA-2,SFA2
Gene ID:	10538
NCBI Accession:	NM_006399

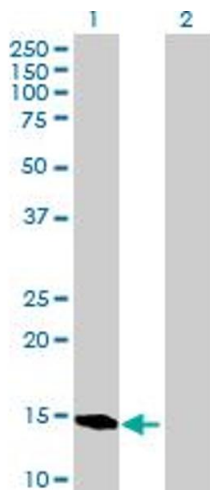
Application Details

Application Notes:	Optimal working dilution should be determined by the investigator.
Restrictions:	For Research Use only

Handling

Buffer:	In 1x PBS, pH 7.4
Handling Advice:	Aliquot to avoid repeated freezing and thawing.
Storage:	-20 °C
Storage Comment:	Store at -20°C or lower. Aliquot to avoid repeated freezing and thawing.

Images



Western Blotting

Image 1. Western Blot analysis of BATF expression in transfected 293T cell line by BATF MaxPab polyclonal antibody.

Lane 1: BATF transfected lysate(13.75 KDa).

Lane 2: Non-transfected lysate.