



[Go to Product page](#)

Datasheet for ABIN523958
anti-ANP32B antibody (AA 1-251)

3 Images

Overview

Quantity:	50 µg
Target:	ANP32B
Binding Specificity:	AA 1-251
Reactivity:	Human
Host:	Mouse
Clonality:	Polyclonal
Conjugate:	This ANP32B antibody is un-conjugated
Application:	Western Blotting (WB), Immunofluorescence (IF)

Product Details

Purpose:	Mouse polyclonal antibody raised against a full-length human ANP32B protein.
Immunogen:	ANP32B (NP_006392.1, 1 a.a. ~ 251 a.a) full-length human protein.
Sequence:	MDMKRRIHLE LRNRTPAAVR ELVLDNCKSN DGKIEGLTAE FVNLEFLSLI NVGLISVSNL PKLPKLLKLE LSENRIFGGL DMLAEKLPNL THLNLSGNKL KDISTLEPLK KLECKLSLDL FNCEVTNLND YRESVFKLLP QLTYLDGYDR EDQEAPSDA EVDGVDEEEE DEEGEDEEDE DDEDGEEEEE DEEDDEDEDV EGDEDDDEVS EEEEEFGLDE EDEDEDEDEE EEEGGKGEKR KRETDDEGED D
Cross-Reactivity:	Human
Characteristics:	Antibody reactive against mammalian transfected lysate.

Target Details

Target:	ANP32B
Alternative Name:	ANP32B (ANP32B Products)
Background:	Full Gene Name: acidic (leucine-rich) nuclear phosphoprotein 32 family, member B Synonyms: APRIL,PHAPI2,SSP29
Gene ID:	10541
NCBI Accession:	NM_006401

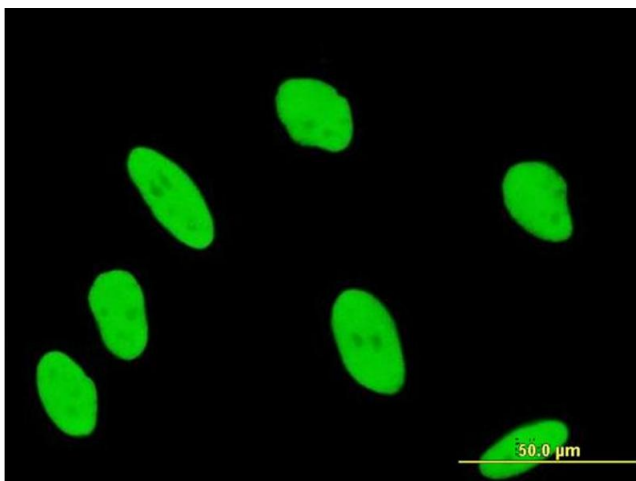
Application Details

Application Notes:	Optimal working dilution should be determined by the investigator.
Restrictions:	For Research Use only

Handling

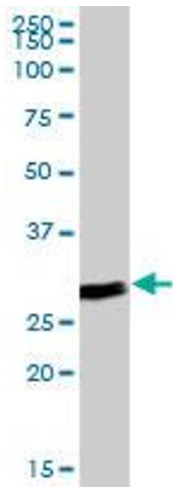
Buffer:	In 1x PBS, pH 7.4
Handling Advice:	Aliquot to avoid repeated freezing and thawing.
Storage:	-20 °C
Storage Comment:	Store at -20°C or lower. Aliquot to avoid repeated freezing and thawing.

Images



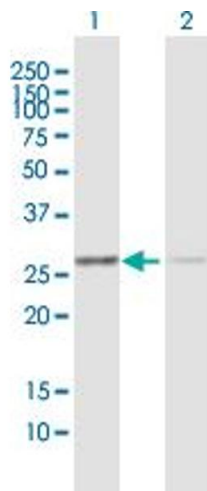
Immunofluorescence

Image 1. Immunofluorescence of purified MaxPab antibody to ANP32B on HeLa cell. [antibody concentration 10 ug/ml]



Western Blotting

Image 2. ANP32B MaxPab polyclonal antibody. Western Blot analysis of ANP32B expression in human pancreas.



Western Blotting

Image 3. Western Blot analysis of ANP32B expression in transfected 293T cell line by ANP32B MaxPab polyclonal antibody.

Lane 1: ANP32B transfected lysate(27.61 kDa).

Lane 2: Non-transfected lysate.