



[Go to Product page](#)

Datasheet for ABIN524008

## anti-GNLY antibody (AA 46-145)

### 2 Images

#### Overview

Quantity:	100 µg
Target:	GNLY
Binding Specificity:	AA 46-145
Reactivity:	Human
Host:	Mouse
Clonality:	Monoclonal
Conjugate:	This GNLY antibody is un-conjugated
Application:	ELISA, Western Blotting (WB)

#### Product Details

Purpose:	Mouse monoclonal antibody raised against a partial recombinant GNLY.
Immunogen:	GNLY (NP_006424.2, 46 a.a. ~ 145 a.a) partial recombinant protein with GST tag. MW of the GST tag alone is 26 KDa.
Sequence:	LAQEGPQGDL LTKTQELGRD YRTCLTIVQK LKKMVDKPTQ RSVSNAATRV CRTGRSRWRD VCRNFMRRYQ SRVTQGLVAG ETAQQICEDL RLCIPSTGPL
Clone:	2A6
Isotype:	IgG2a
Cross-Reactivity:	Human
Characteristics:	Antibody Reactive Against Recombinant Protein.

## Target Details

Target:	GNLY
Alternative Name:	GNLY ( <a href="#">GNLY Products</a> )
Background:	Full Gene Name: granulysin Synonyms: 519,D2S69E,LAG-2,LAG2,NKG5,TLA519
Gene ID:	10578
NCBI Accession:	<a href="#">NM_006433</a>

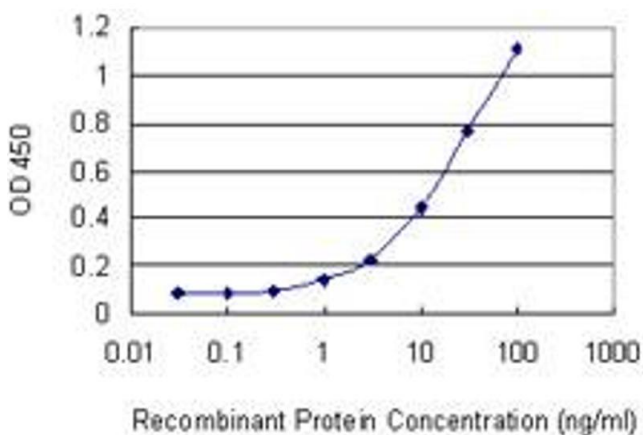
## Application Details

Application Notes:	Optimal working dilution should be determined by the investigator.
Restrictions:	For Research Use only

## Handling

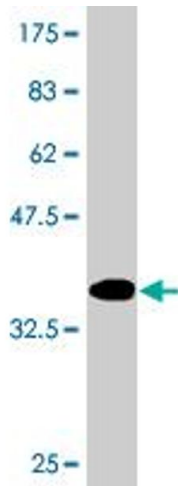
Buffer:	In 1x PBS, pH 7.4
Handling Advice:	Aliquot to avoid repeated freezing and thawing.
Storage:	-20 °C
Storage Comment:	Store at -20°C or lower. Aliquot to avoid repeated freezing and thawing.

## Images



### ELISA

**Image 1.** Detection limit for recombinant GST tagged GNLY is 0.3 ng/ml as a capture antibody.



### Western Blotting

**Image 2.** Western Blot detection against Immunogen (36.74 kDa).